

# 31<sup>st</sup> Annual AWMA Midwest Section Environmental Technical Conference

Missouri Department on Natural Resource

Kyra Moore

May 2024



# Department Overview April 2024

Dru Buntin, Department Director

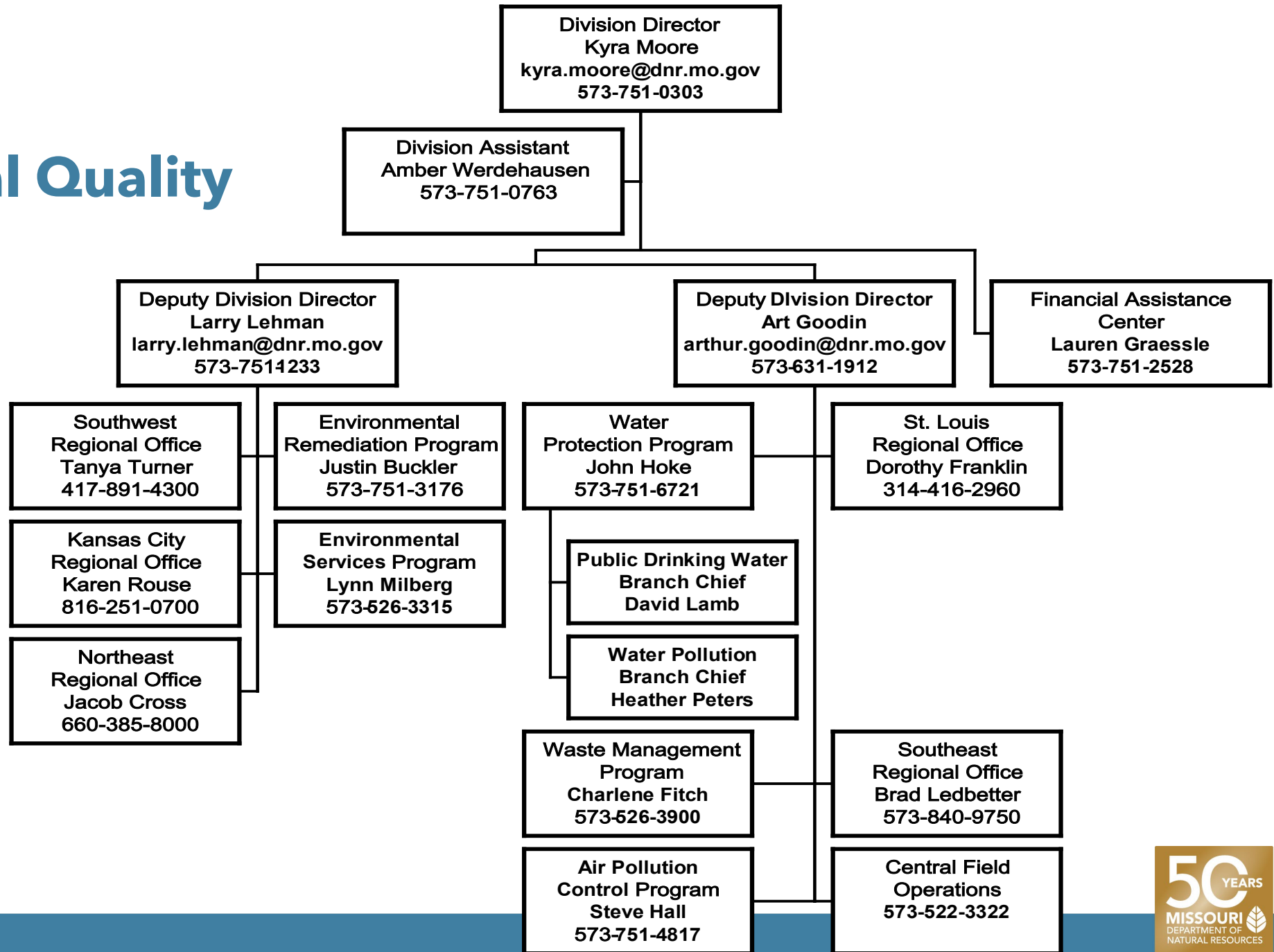
- Hannah Humphrey, Deputy Department Director
  - **Kyra Moore, Division of Environmental Quality (DEQ) Director**
  - Art Goodin, DEQ Deputy Director
  - Larry Lehman, DEQ Deputy Director
  - **Emily Wilbur, Division of Energy Director**
  - Darcy Bybee, Division of Administrative Support (DAS) Director
  - Sara Pringer, DAS Deputy Director
  - **Carey Bridges, Missouri Geological Survey (MGS) Director**
  - Jerry Prewett, MGS Deputy Director
  - Chris Wieberg, MGS Deputy Director
  - **David Kelly, Missouri State Parks (MSP) Director**
  - Brian Stith, MSP Deputy Director
  - Laura Hendrickson, MSP Deputy Director

For a more complete Department organization chart:

<https://dnr.mo.gov/document-search/organization-chart-all-programs>

# Division of Environmental Quality

## April 2024





**Art Goodin**  
Deputy Division Director



**Kyra Moore**  
Division Director



**Larry Lehman**  
Deputy Division Director



**Amber Werdehausen**  
Division Assistant



**Air Pollution  
Control Program**  
Steve Hall



**Environmental  
Remediation  
Program**  
Justin Buckler



**Environmental  
Services Program**  
Lynn Milberg



**Financial  
Assistance Center**  
Lauren Graessle



**Waste  
Management  
Program**  
Charlene Fitch



**Water Protection  
Program**  
John Hoke



**Kansas City  
Regional Office**  
Karen Rouse



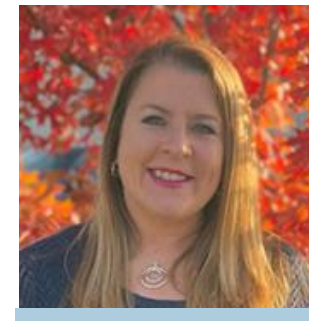
**Northeast  
Regional Office**  
Jacob Cross



**St. Louis  
Regional Office**  
Dorothy Franklin



**Southeast  
Regional Office**  
Brad Ledbetter



**Southwest  
Regional Office**  
Tanya Turner

# DEQ by the Numbers

---

**1974**

DEQ: part of the department established in 1974

Programs included: Air Quality, Water Quality, Water Supply, Waste Management, Land Reclamation, Soil and Water Conservation, Laboratory Services, and Regional Offices

---

**700**

DEQ has over 700 full time positions

---

**13**

DEQ is comprised of 13 different 'groups/offices'

6 programs, 5 regional offices, 1 Central Field Operations, and 1 Admin team.

---

**9**

DEQ team members housed in 9 different office buildings

Jefferson City (1101 Riverside, 1730 E. Elm, 1659 E. Elm, 2710 W. Main), Kansas City, Macon, Poplar Bluff, Springfield, St. Louis

---

**300+**

DEQ lives by rules and regulations: over 300 state regulations, hundreds of State Statutes, and too many to count federal rules

Federal: Clean Air Act, Clean Water Act, Safe Drinking Water Act, Resource Conservation and Recover Act, Comprehensive Environmental Response Compensation and Liability Act, Federal Facilities Act.....

---

**860,000,000**

DEQ passes through over \$860 Million of annual budget to communities for infrastructure/environmental improvements. PLUS over \$400 million/ ARPA projects!

# DEQ Teams

- DEQ Administration
- Air Pollution Control Program
- Environmental Remediation Program
- Environmental Services Program
- Financial Assistance Center
- Waste Management Program
- Water Protection Program
  - Drinking Water Branch
  - Wastewater Branch
- Kansas City Regional Office
- Northeast Regional Office
- Southeast Regional Office
- Southwest Regional Office
- St. Louis Regional Office
- Central Field Operations (performs Wastewater and Drinking Water Inspections in central counties)



[DEQ Regional Office - Interactive Map](#)

# What do we do in Missouri's Division of Environmental Quality?



Brownfields  
Solid Waste  
Advisory Board  
Safe Drinking  
Water  
Commission  
Air Program  
Advisory Forum  
Disaster  
Response and  
Coordination  
Financial  
Assistance  
Environmental  
Restoration

Air Monitoring  
Inspections  
Operator  
Certification  
Training  
Budgeting  
Chemical Analysis  
Concern  
Investigations  
Hazardous Waste  
Commission  
Environmental  
Emergency  
Response

Harmful Algal  
Bloom Response  
Emissions  
Analysis  
Long Term  
Stewardship  
Community  
Engagement  
Rulemaking  
Source Water  
Protection  
Public Meetings

Permitting  
Clean Water  
Commission  
Operator  
Certification  
Community  
Engagement  
Quality  
Assurance

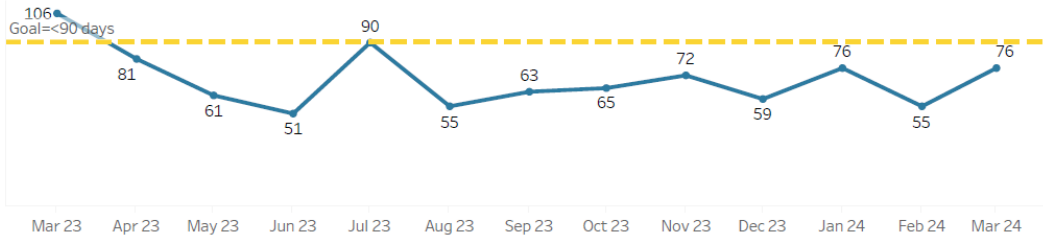
Compliance Assistance  
Laboratory  
Analysis  
Superfund  
Vehicle Emissions  
Inspections  
Data  
Management  
and Reporting  
Water Monitoring  
Public Outreach  
Clean Water Forum  
Asbestos  
Sanitary  
Surveys

Quality  
Management Plan  
Tanks  
Drinking Water  
Monitoring  
Stream Team  
Water Quality  
Assessment  
Volunteer Water  
Quality Monitoring  
Air Conservation  
Commission  
Drinking Water  
Lab Certification

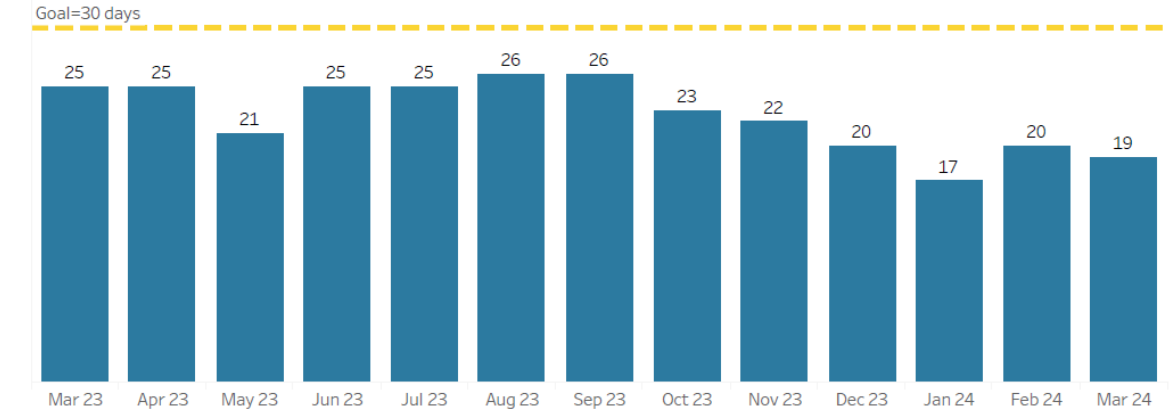
State Plans  
Training and  
Outreach

# Permitting - Days to Issue (examples)

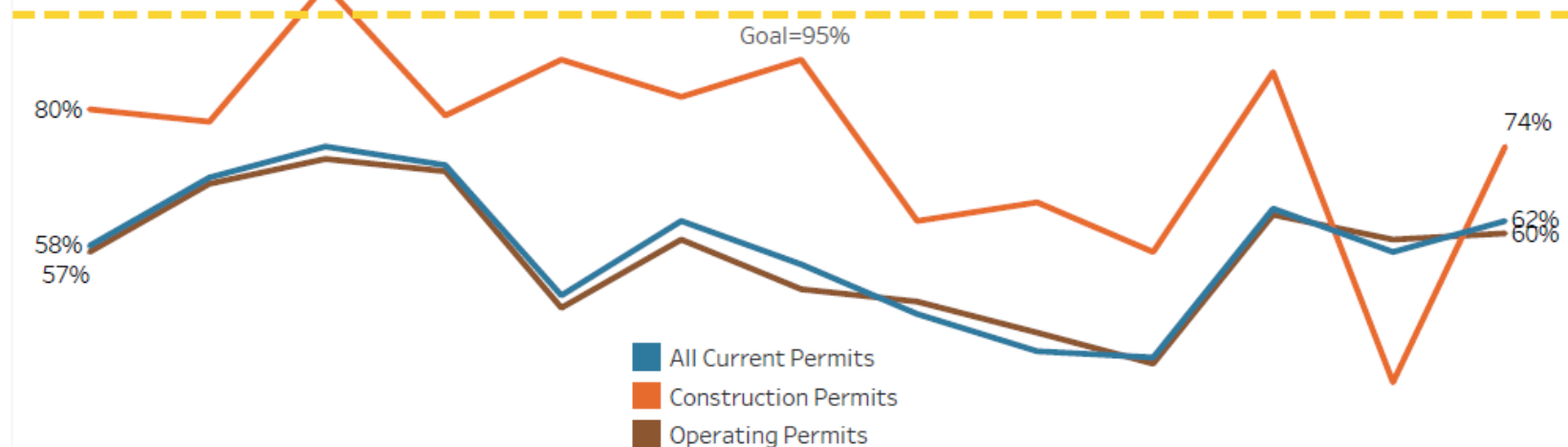
## Minor Air Construction Permits



## Public Drinking Water Permits



## Water Pollution Permits



# What's else is going on....a few highlights

- Fees
- PFAS
- PM2.5
- Ozone
- CCR
- MRBCA



# Questions?