



Evergy's ESG Program

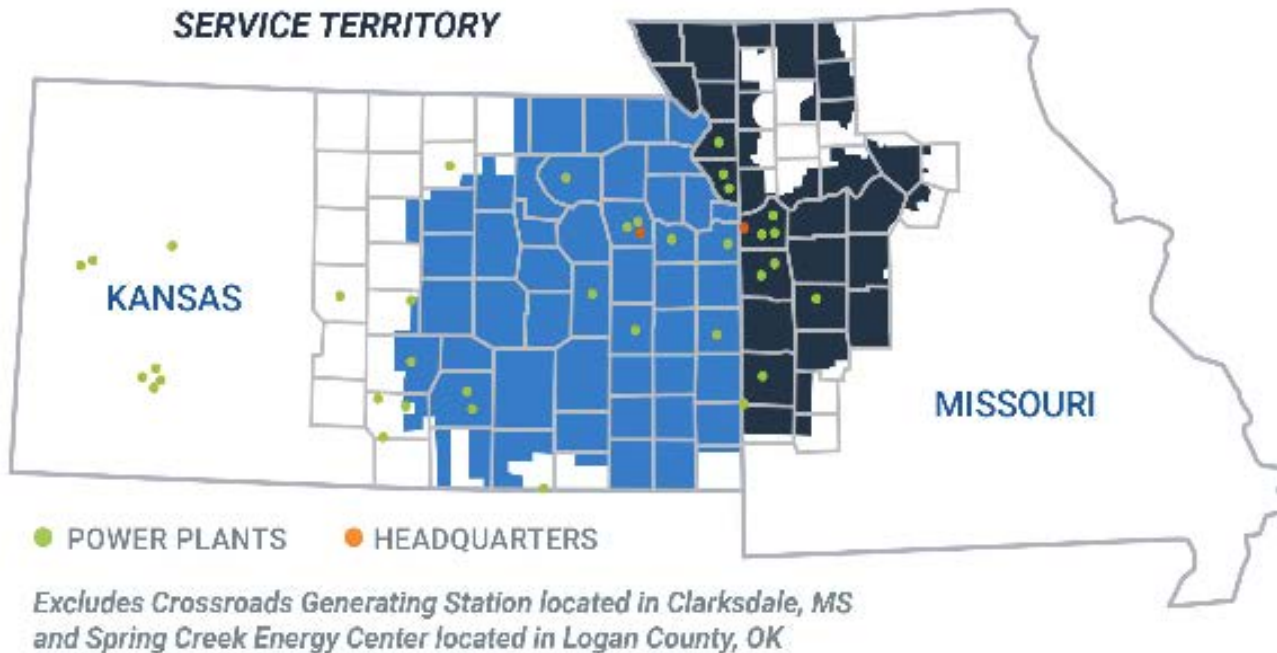
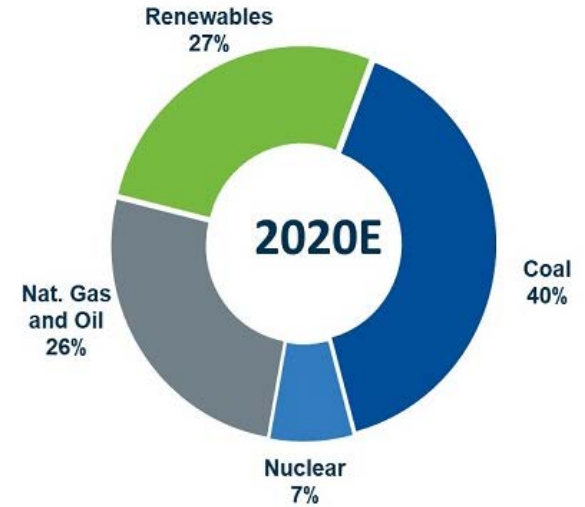
Environmental Social & Governance

Dawn Hein, Conservation & Sustainability



Evergy – We empower a better future.

- Formed in summer of 2018
- 1.6 million customers
- \$14 billion rate base



ESG = Sustainability





History of ESG Activity

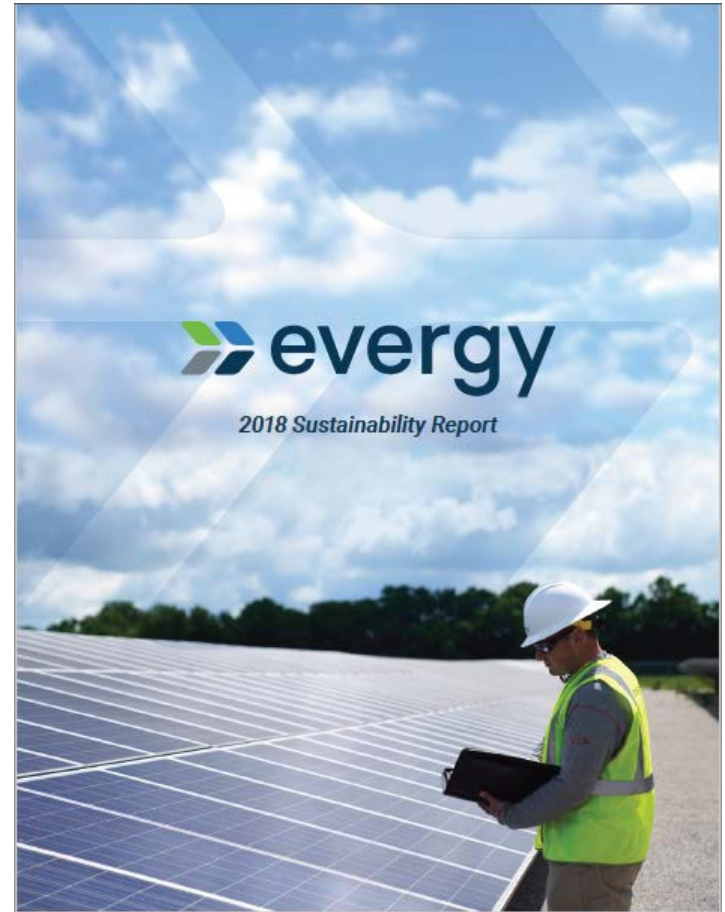
- 1997 Kyoto Protocol.
- 2000 Carbon Disclosure Project (CDP) formed.
- Foreign owned companies start releasing “Sustainability Reports” and carbon reduction plans.
- 2015 US signs Paris Agreement, Clean Power Plan.
- Investors start using 3rd Party Rating Agencies like CDP to inform ESG investment decisions.
- 2017 Westar and KCP&L in middle of merger discussions. Westar engages with Edison Electric Institute (EEI), KCP&L funds Electric Power Research Institute’s (EPRI) Energy Sustainability Interest Group (ESIG). Each company releases individual EEI Template Reports.
- 2018 Evergy publishes joint narrative and separate operating company reports.
- 2019 Evergy publishes first combined company report.

Evergy EEI Template and Sustainability Report

EEI ESG/Sustainability Template – Quantitative Information

Parent Company: Evergy, Inc.
Operating Company(s): ICRBLL, ICRBLL Greater Missouri Operations Company, Westar Energy Inc.
Business Type(s): vertically integrated
State(s) of Operation: Kansas, Missouri
State(s) with RPS Programs: MO, KS (voluntary)
Regulatory Environment: Regulated
Report Date: July-19

	Baseline 2005	2017	2018
Utility Portfolio			
Total Available Nameplate Generation Capacity at end of year (MW)			
Coal	6,967	7,161	6,236
Natural Gas	4,427	5,016	4,263
Nuclear	1,162	1,218	1,218
Petroleum	690	690	690
Total Renewable Energy Resources	66	3,227	3,520
Biomass/Biogas	6	10	10
Hydroelectric	-	66	66
Solar	-	4	4
Wind	60	3,148	3,441
Net Generation for the data year (MWh)			
Coal	43,066,973	31,480,747	27,696,113
Natural Gas	1,596,503	1,834,769	2,698,045
Nuclear	8,291,688	10,009,125	8,618,192
Petroleum	991,388	41,561	73,481
Total Renewable Energy Resources	326,788	11,298,658	11,693,542
Biomass/Biogas	0	71,999	59,505
Hydroelectric	0	306,699	302,379
Solar	0	3,928	6,808
Wind	326,788	10,906,032	11,264,856
Investing in the Future: Capital Expenditures, Energy Efficiency (EE), and Smart Meters			
Total Annual Capital Expenditures (nominal dollars)	\$ -	\$764,645,000	\$ 1,069,700,000
Incremental Annual Savings from EE Measures (MWh, at end of year)	\$ -	\$18,181	\$16,977
Investment in EE Programs (nominal dollars, at end of year)	\$ -	\$40,340,800	\$22,473,758
Percent of Total Electric Customers with Smart Meters (at end of year)	-	82%	88%
Retail Electric Customer Count (at end of year)			
Commercial	-	186,793	188,700
Industrial	-	6,757	7,100
Residential	-	1,377,170	1,392,500
Emissions			
GHG Emissions: Carbon Dioxide (CO2) and Carbon Dioxide Equivalent (CO2e)			
Owned Generation			
Carbon Dioxide (CO2)			
Total Owned Generation CO2 Emissions (MT)	45,414,015	31,390,290	29,279,747
Total Owned Generation CO2 Emissions Intensity (MT/Net MWh)	0.8368	0.5743	0.5773
Carbon Dioxide Equivalent (CO2e)			
Total Owned Generation CO2e Emissions (MT)	-	31,664,347	29,716,109
Total Owned Generation CO2e Emissions Intensity (MT/Net MWh)	-	0.5794	0.5859
Non-Generation CO2e Emissions			
Fugitive CO2e emissions of sulfur hexafluoride (MT)	-	36,427	26,840
Nitrogen Oxide (NOx), Sulfur Dioxide (SO2), Mercury (Hg)			
		Total	
Nitrogen Oxide (NOx)			
Total NOx Emissions (MT)	87,225	14,092	13,189
Total NOx Emissions Intensity (MT/Net MWh)	0.0016	0.0003	0.0003
Sulfur Dioxide (SO2)			
Total SO2 Emissions (MT)	147,743	9,557	7,968
Total SO2 Emissions Intensity (MT/Net MWh)	0.0027	0.0002	0.0002
Mercury (Hg)			
Total Hg Emissions (kg)	-	82.68	91.0
Total Hg Emissions Intensity (kg/Net MWh)	-	0.0000015	0.000002



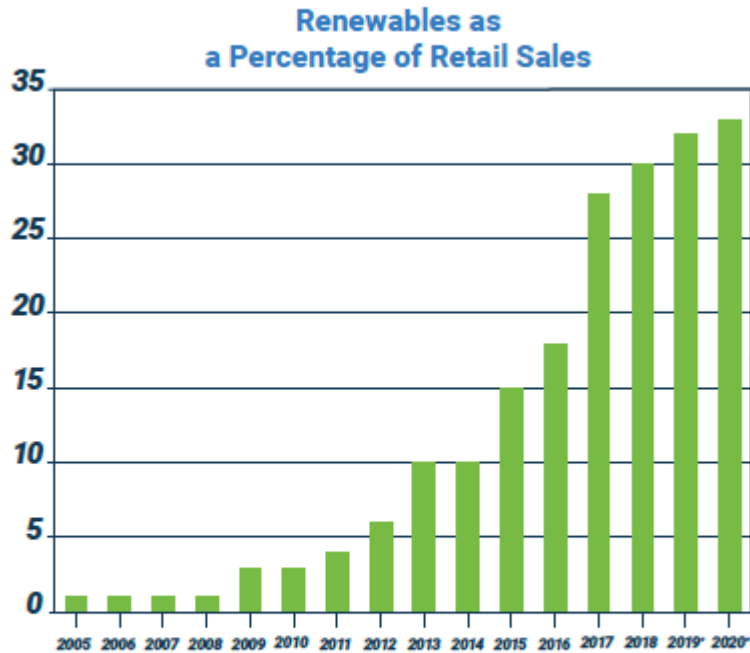
<http://www.evergyinc.com/about-evergy/sustainability>



ESG-
Environmental

ESG: Environment – Air Emissions

2020 PROJECTIONS

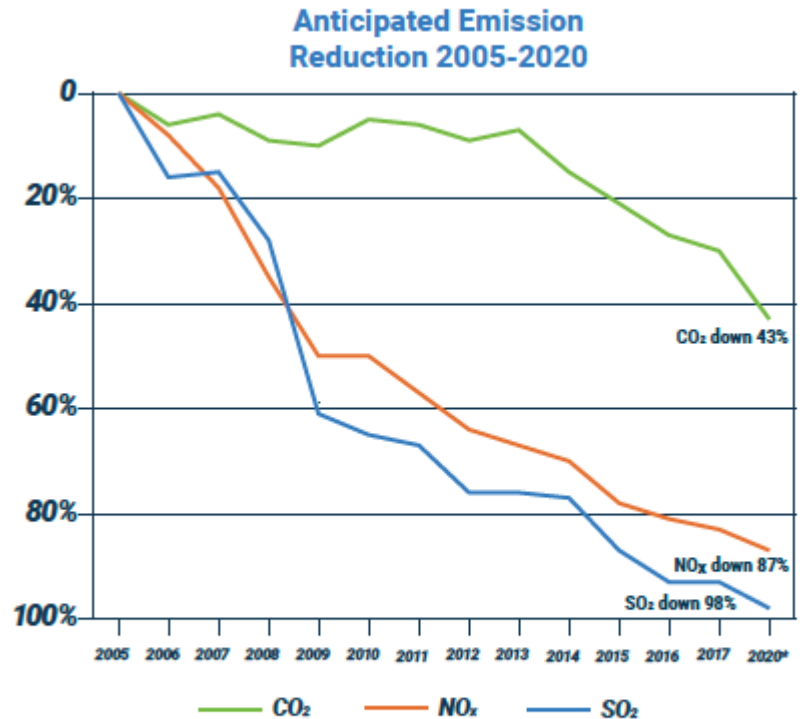


* PROJECTED

Includes owned generation and power purchase agreements.

Missouri RPS requires 15% of electricity sales to customers with renewable sources by 2021. Kansas has voluntary goal of 20% of utility peak by 2020.

These projections are subject to risks and uncertainties that could cause actual results to differ from present expectations. A description of some of the risks and uncertainties can be found in the reports that we file with the Securities and Exchange Commission.





Carbon Reduction Goal

- Reduce 80% of CO2 over 2005 levels by 2050.
 - Retiring all coal power plants in the Evergy fleet at the end of their useful life, which is currently estimated to be between 2040-2050, with the exception of Iatan 2 in Missouri;
 - Continuing to make significant investments in renewable energy and energy efficiency;
 - Operating the Wolf Creek Nuclear Station until its license expires in 2045; and
 - Adding a small amount of natural gas generation, if additional carbon-free generation is not available within the plan's timeframe.
- Evergy will be releasing our Integrated Resource Plan (IRP) in 2021.



Carbon Reduction Goal – Why 80% by '50

- Let's start from the beginning:
 - International Panel on Climate Change/UN Framework started in 1988 – Nothing mandatory.
 - Kyoto Protocol 1997 – Big players withdrew, nothing substantive.
 - Paris Agreement 2015 – Focused on peer pressure and transparency – USA has withdrawn.
 - CPP (2015) – Federal Standards + Renewables + EE – Coal.
 - ACE rule (current) – State Guidelines + Efficiencies (HR) + Flexibility.
- Paris Agreement and CPP - policy was to reduce carbon emissions from the electric sector **80% by 2050** from the 2005 levels using IPCC Assessment Report.
 - A majority of EEI member companies have adopted this goal.
 - Based on 2 degree scenarios.

ESG - Environment – Renewables



- We own or fund 25 smaller scale solar projects: 6.5 MW
- Greenwood Energy Center: 3 MW
- Hutchinson Kansas: 1.2 MW
- 4,535 MW Wind

AWMA 2-12-20



Evergy Green Team

History and Background

Formed in 1989, the Green Team is an employee-led volunteer group of 30-35 employees and retirees from across the service territory that take on projects that benefit the environment. Completing 50 to 70 projects per year on weekends and evenings, the Green Team collaborates with conservation groups, agencies and schools in enhancing and fostering an understanding of the environment.

- Projects focus on Environmental Stewardship and Education
- Annually involve 250-600 employees, retirees and their family members
- Areas of focus: Wildlife habitat improvement, sensitive plants and species, enhancing environmental education, access to environmentally significant areas
- Access to various tools and equipment enhances our ability to complete larger projects
- Recycled poles are a great material resource for many projects.

Project Summary Last 5 Years			
Year	# of Major Projects	# of Reg Projects	Hours
2019	8	68	2,852
2018	9	54	2,815
2017	8	56	2,494
2016	9	54	3,787
2015	7	58	3,253

*Major Project = 100+ hours



Little Jerusalem Badlands State Park

Partnership with KDWPT and The Nature Conservancy



Little Jerusalem Badlands State Park

Partnership with KDWP and The Nature Conservancy





ESG-
Social



ESG - Social

VALUES

People first.

SAFETY

- Safety is everyone's responsibility
- We value safety at all times and in all situations
- We never compromise safety
- Zero unsafe behavior is the goal

INTEGRITY

- Integrity and honesty are the foundations of all we do
- We respect each other and those we serve
- We respect and protect the environment
- We will focus on the whole of the organization

OWNERSHIP

- We are always accountable for our actions
- We are committed and responsive to our owners
- We continuously work to improve performance

ADAPTABILITY

- We use innovation and flexibility to meet the emerging needs of our customers and owners
- We demand continuous improvement and encourage breakthrough thinking that challenges the status quo

ESG - Social

- Safety
- Energy efficiency programs
- Low income assistance
- Corporate and Employee Giving
- Volunteerism
- Created internal Supplier Diversity Council, participating in utility supply chain sustainability interest group.





ESG- Governance



ESG - Governance

- Executive Steering Committee
 - Reports to Board of Directors
 - Nuclear, Operations, and Environmental Oversight Committee
 - Nominating, Governance, and Corporate Responsibility Committee
- ESG Working Group
 - Reports to Executive Steering Committee.
 - Conservation & Sustainability, Operations, Investor Relations, Legal, Diversity and Inclusion, Corporate Communications, Public Affairs.
 - Other contributors brought in as needed.
 - Provides for a focused interest group to help make decisions and provide input on routine ESG issues (shareholder proposals, data requests, etc).
- Conservation & Sustainability
 - Tasked with coordinating Steering Committee and Working Group.
 - Following industry trends.
 - Carbon initiatives
 - Responding to 3rd party ratings agencies .
 - Participating in EPRI and EEI projects.
 - Compiling annual EEI ESG Report.

 Questions?

dawn.hein@evergy.com

