

Our Work for the Kansas River

Dawn Buehler

Kansas Riverkeeper® & Executive Director

riverkeeper@kansasriver.org



**FRIENDS
OF THE
KAW**

KANSAS RIVERKEEPER®



WATERKEEPER® ALLIANCE
MEMBER



Photo by Lisa Grossman

HOW WE PROTECT THE KANSAS RIVER

- ▶ About Friends of the Kaw, the Kansas Riverkeeper
- ▶ About the Kansas River watershed and our Advocacy



Friends of the Kaw is the only 501(c)(3) non-profit dedicated to protecting and preserving the Kansas River.

OUR MISSION IS TO:

Protect and preserve the Kansas River

Advocate for the rehabilitation of the Kansas River's environs, including its water quality and wildlife habitat.

Promote compatible public recreational use and adequate public access

To these ends we shall seek to cooperate with other persons, organizations and public agencies.



Friends of the Kaw supports the Kansas Riverkeeper®, a non-governmental public advocate who holds the community accountable for the health of the Kansas River.

The Kansas Riverkeeper®....

- ▶ Is the eyes, ears and voice of the Kansas River
- ▶ Is a leader, educator, investigator, media spokesperson and a scientist





The Waterkeeper Alliance connects and supports over 300 local Waterkeeper programs to provide a voice for waterways and their communities worldwide.

What does a RIVERKEEPER do?

- Hold the community accountable for the health of the river
- Participate in public meetings to represent the river at the county, state and local government levels
- Monitor the river with River Checks
- Respond to and mediate suspected pollution
- Advocate on behalf of the Kansas River locally and at the Statehouse
- Be a media spokesperson for the Kansas River
- Manage efforts to protect, advocate and discover the Kansas River.



OUR PROGRAMS

- Adopt-A-Boat Ramp Program
- Educational Paddle Trip Program
- River Cleanup Program
- Ecosystem Restoration Program
- Kids About Water Program
- Water's Journey Program



HOW WE PROTECT THE KANSAS RIVER

- ▶ About Friends of the Kaw, the Kansas Riverkeeper
- ▶ About the Kansas River watershed and our Advocacy



The Kansas River is the longest prairie based river system in the world.



The River:

- Is home to a wide variety of plants and animals including frogs, toads, turtles, snakes, salamanders and Eagles
- And it's banks are home to 60 % of the population in Kansas.
- There were originally 48 mussel species in Kansas! Of these 6 are extirpated and 1 is almost; 39 have suffered range reductions or widespread thinning (Angelo et al. 2009)
- A record 27 nesting pairs of Bald Eagles on the Kansas River

Along the River

- 10 counties and many wastewater treatment plants.
- Small farming communities, suburban developments, large cities and open pastures
- Hydro generated power at Bowersock
- Touches the lives of more than forty percent of the people in Kansas.
- The river -
 - generates electricity,
 - gives us water to drink
 - nourishes our gardens
 - Provide recreational use



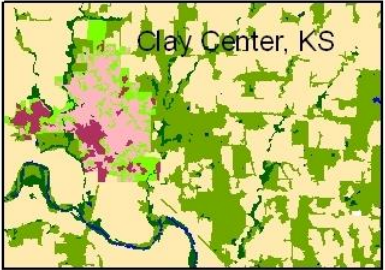
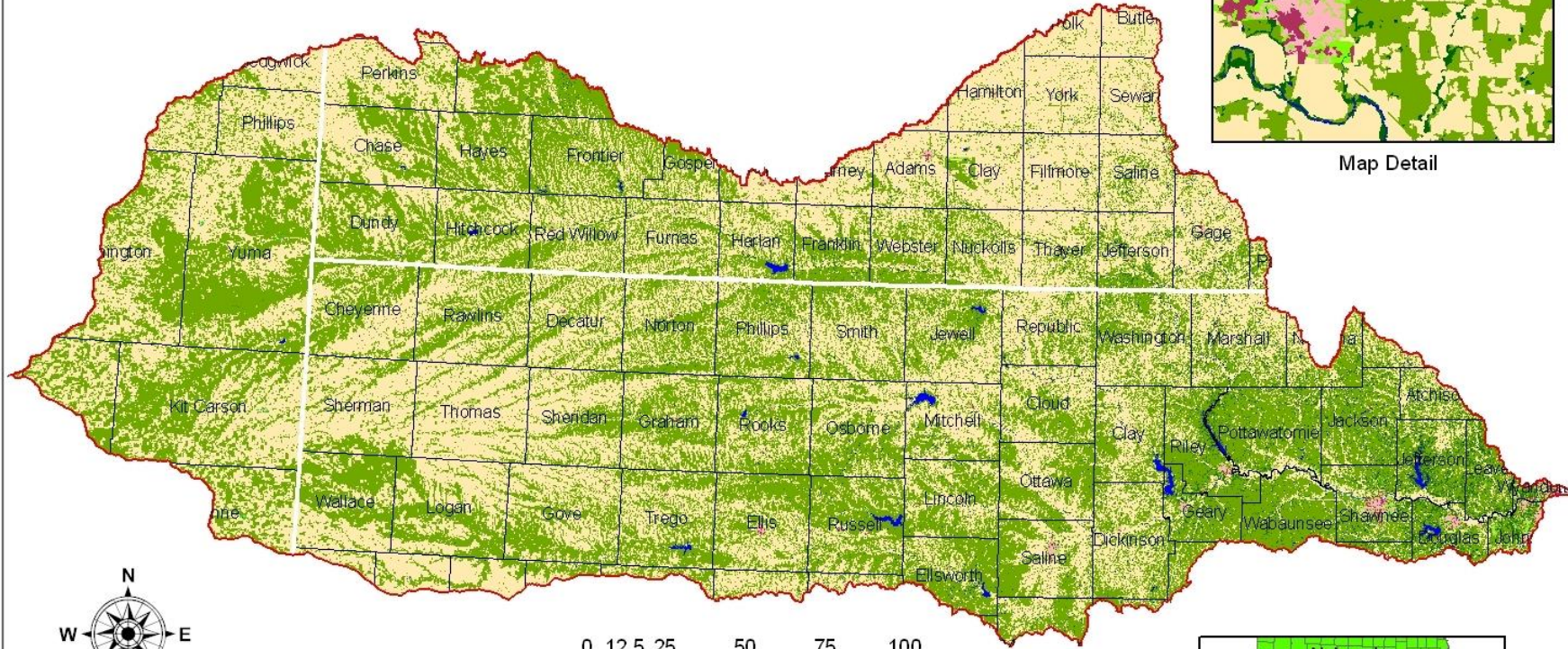
Why is Friends of the Kaw and the Kansas Riverkeeper's advocacy so important?



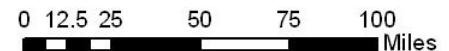
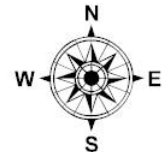
The Kansas (Kaw) River is a drinking water source for over 800,000 people.

KANSAS RIVER WATERSHED

Modified Anderson Level I Land Use/Land Cover



Map Detail



Legend	
Cropland	Urban Industrial
Grassland	Urban Residential
Woodland	Urban Openland
Other	Water



Sponsored by the National Science Foundation (EPSCoR 0553722) and the Kansas Technology Enterprise Corporation

Tour of Kansas River Watershed

The Kansas River watershed is 61,178 square miles, which is about the size of Ohio and the predominant land use is commercial agriculture.

It provides drinking water to 800,000 Kansans (nearly 1/3 of the state).

Reservoir water and River water are intimately connected.

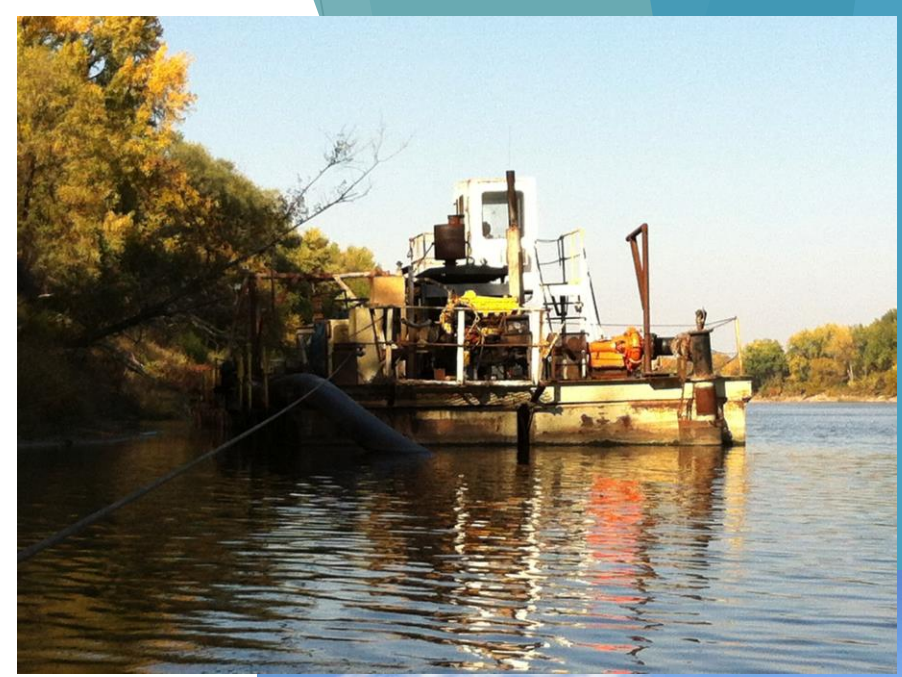


Bowersock Dam is the largest structure on the mainstem of the Kansas River.

Eight major reservoirs are on tributaries of the Kansas River. Perry Lake and Clinton Lake are the closest to Lawrence.

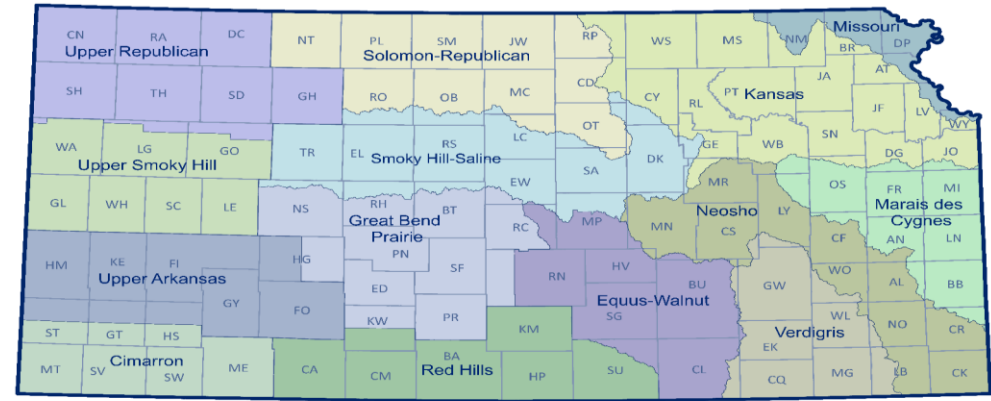
Health and Challenges

- Pollution – Non-Point Source and Point Source
- Land Use Changes Impact the River
- Agriculture – No Till and Cover Crops
- Population Increases/Demands on Water
- Drinking Water Supply
- Dredging for Sand
- Climate Change



ADVOCACY EFFORTS

- ▶ Kansas Water Vision
 - ▶ Regional Advisory Committees
 - ▶ Funding the Kansas Water Plan
- ▶ Appointed to Oil & Gas Advisory Committee by Governor Kelly
- ▶ Lower Kansas WRAPS Stakeholder Leadership Team
- ▶ Topeka Riverfront Advisory Committee
- ▶ Sustainable Rivers Program – Steering Committee for Kansas River



Thoughts on some connections we hope to have created...

- ▶ The Kaw is the drinking water source for 800,000 Kansans.
 - ▶ Water quality within the entire watershed impacts what we drink.
- ▶ The river is a reflection of how we use the land and the quality of water coming out of the major reservoirs.
 - ▶ We can do more to prevent water quality issues or we can pay more to clean them up.
- ▶ Prevention starts with education, which matters at every age and stage.
- ▶ Connect people back to a place where they can have an experience in nature and better understand and want to help you protect it.

WE NEED VOLUNTEERS!

Are you interested in volunteering with Friends of the Kaw?

Contact the Riverkeeper to be added to our volunteer base contact list...get notifications of when we need help!



KAW RIVER GUIDES

Friends of the Kaw sponsors educational paddle trips from April through October every year on the Kansas River. We need volunteers like you to make this happen! If you are interested in becoming a volunteer and you have your own kayak, please join us by contact the Riverkeeper!



MEMBERSHIP

FOK is membership based! Through our membership we can INCREASE OUR VOICE!

--- Member Only Tours

--- Members Free River Trip with own boat

--- Member Only Offers

Our advocacy is stronger with you behind us....join today us today and increase our VOICE!



FOK ANNUAL EVENTS FOR ADVOCACY FUNDRAISERS

Come join FOK at one of our many events throughout the year that raise funds for our work for the Kansas River!

- Wild & Scenic Film Festival – last week of February every year!
- **BEERS OF THE KAW!**
November 1, 2020 at Abe & Jake's Landing in Lawrence, KS



Visit our expansive website at www.kansasriver.org

[HOME](#)[ABOUT FOK](#)[DONATE](#)[GET INVOLVED](#)[CONTACT US](#)[CALENDAR](#)[EVENTS](#)[LEARN](#)[PADDLE AND FISH](#)[PROTECT](#)[STORMWATER](#)

NOVEMBER 3, 2019 BY [DAWN BUEHLER](#)

River Protector Endowment Campaign



SUPPORT FOK

Friends of the Kaw welcomes monetary donations of any size. These funds are used to support our educational activities and help us protect the Kaw.





Dawn Buehler, Kansas Riverkeeper
Email: riverkeeper@kansasriver.org

Report pollution: 866 RIVKEEP

Website: www.kansasriver.org

Follow us on Facebook, Twitter and
Instagram...look for Friends of the Kaw