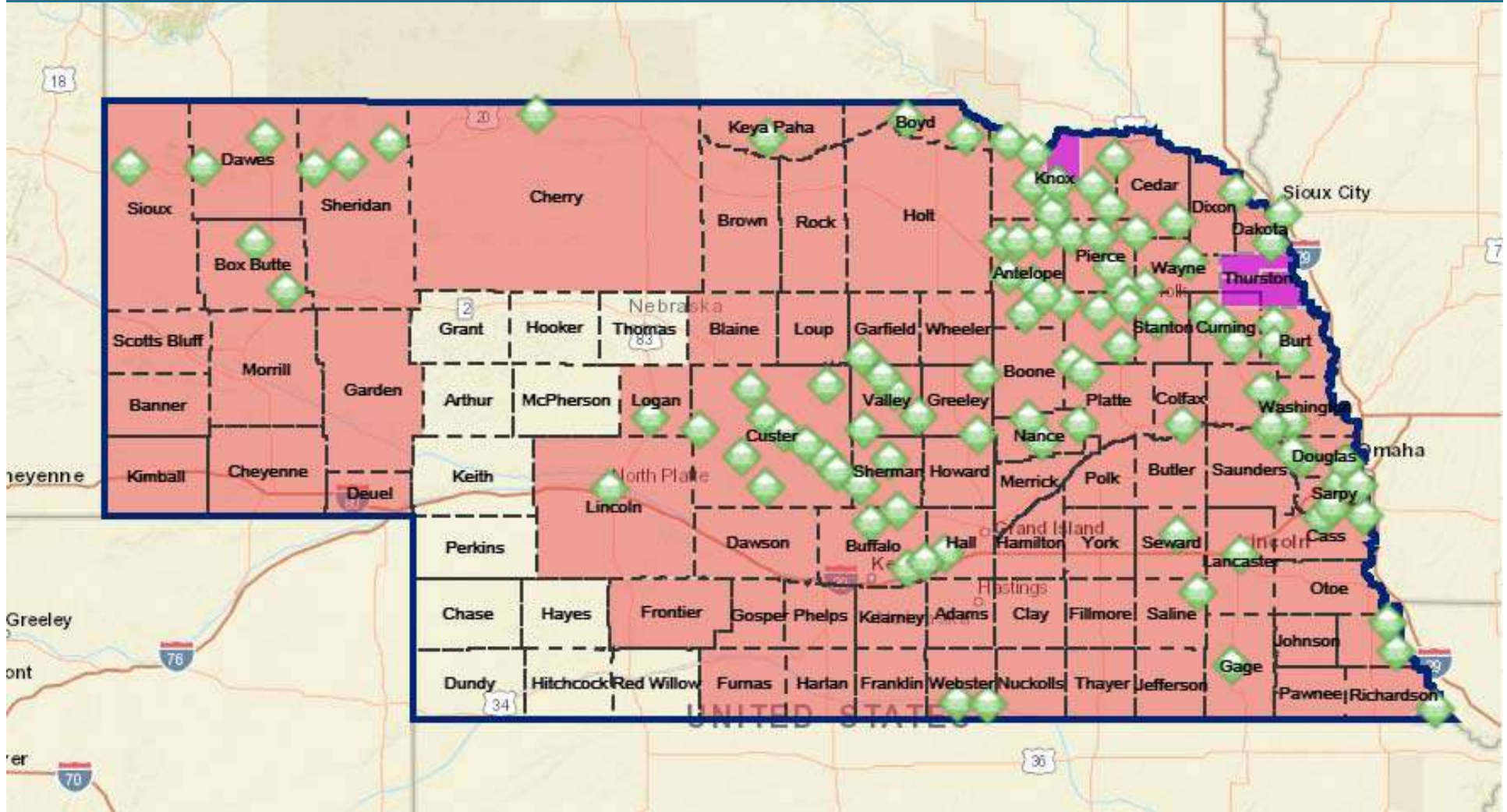


Nebraska Dept. of Environment and Energy – Update & Vision

2019 AWMA ANNUAL MEETING
Kara Valentine – Deputy Director



Declared Emergency Areas



Flood Damage Estimates

- Loss of Livestock and Crop Losses total nearly \$900,000,000
- Infrastructure of roads, bridges, and more, nearly half a billion dollars lost
- Over 2,000 Homes and 340 businesses damaged or destroyed
- 104 cities, 81 counties, and 5 tribal areas declare emergencies
 - Major damage in Nance and Sarpy counties
 - (\$231 million and \$106 million, respectively)

NEBRASKA
Good Life. Great Resources.

Department of Environment and Energy
Air *Water* *Land* *Energy*

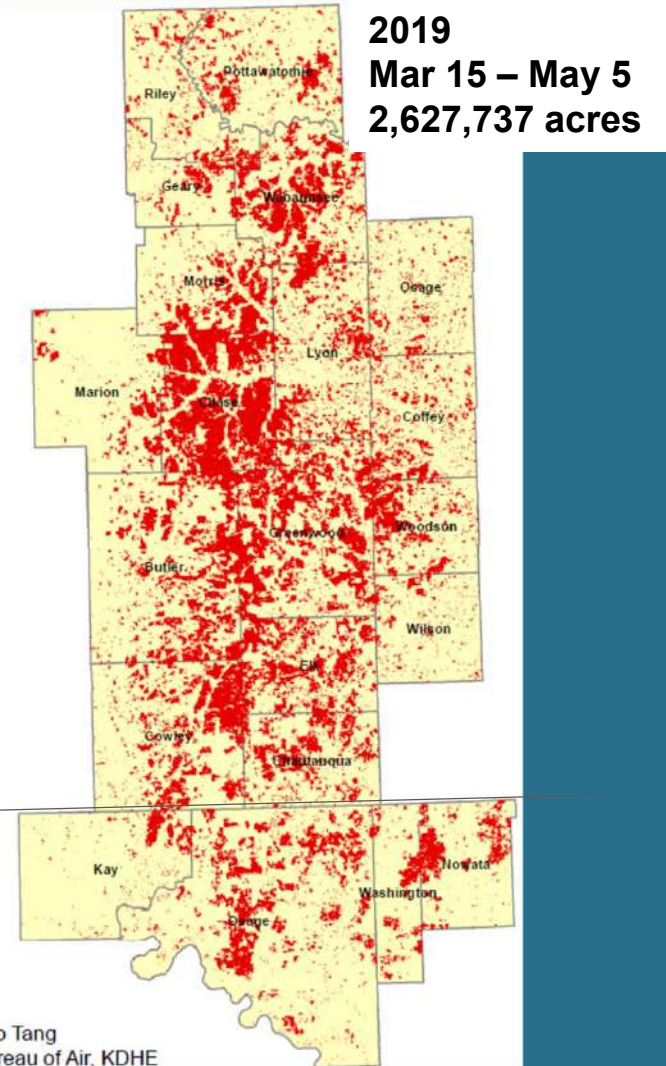
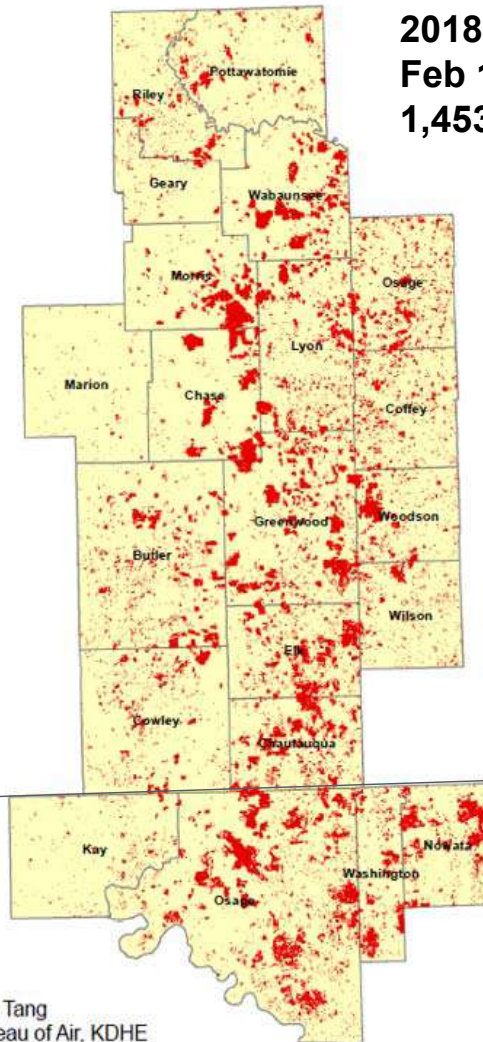
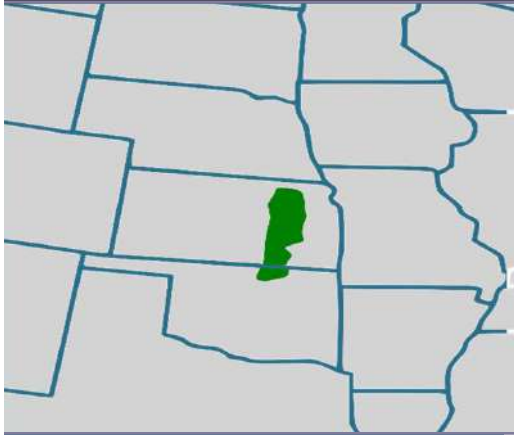


NEMA, 2019

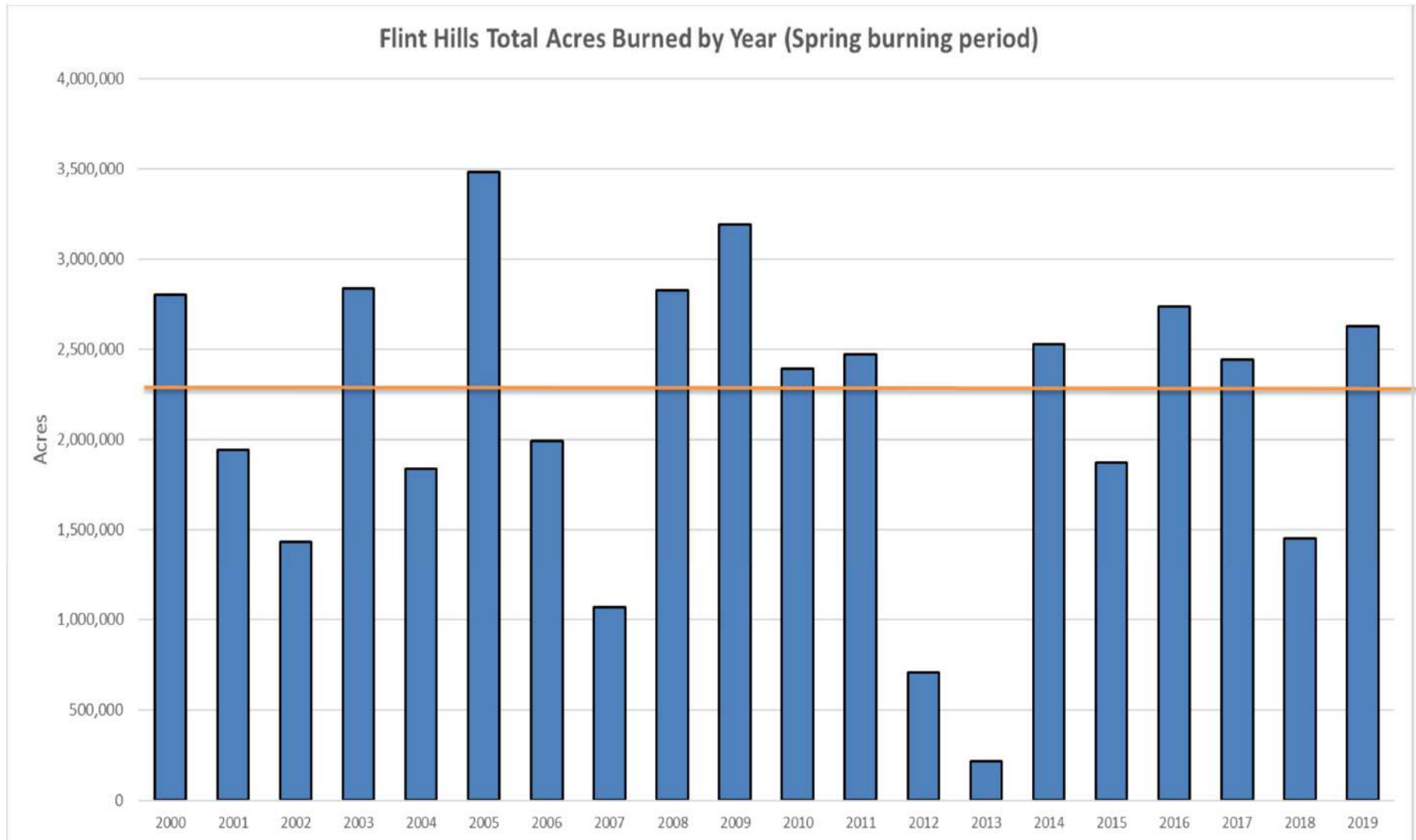
Air Division

- **Source Trial Policy**
 - Allows for 30 day trial before performance testing or other emission documentation required
 - CEMs are exempt
- **Compendium**
 - Policies and decisions
 - Used internally on mainly permitting decisions
 - Will expand to external use soon
- **General and Standard Conditions**
 - Will provide opportunity for public comments
 - State and Local Emission Inventory System (SLEIS)
 - live now 100%, due march 2020
 - Initiating a new policy on announced inspections

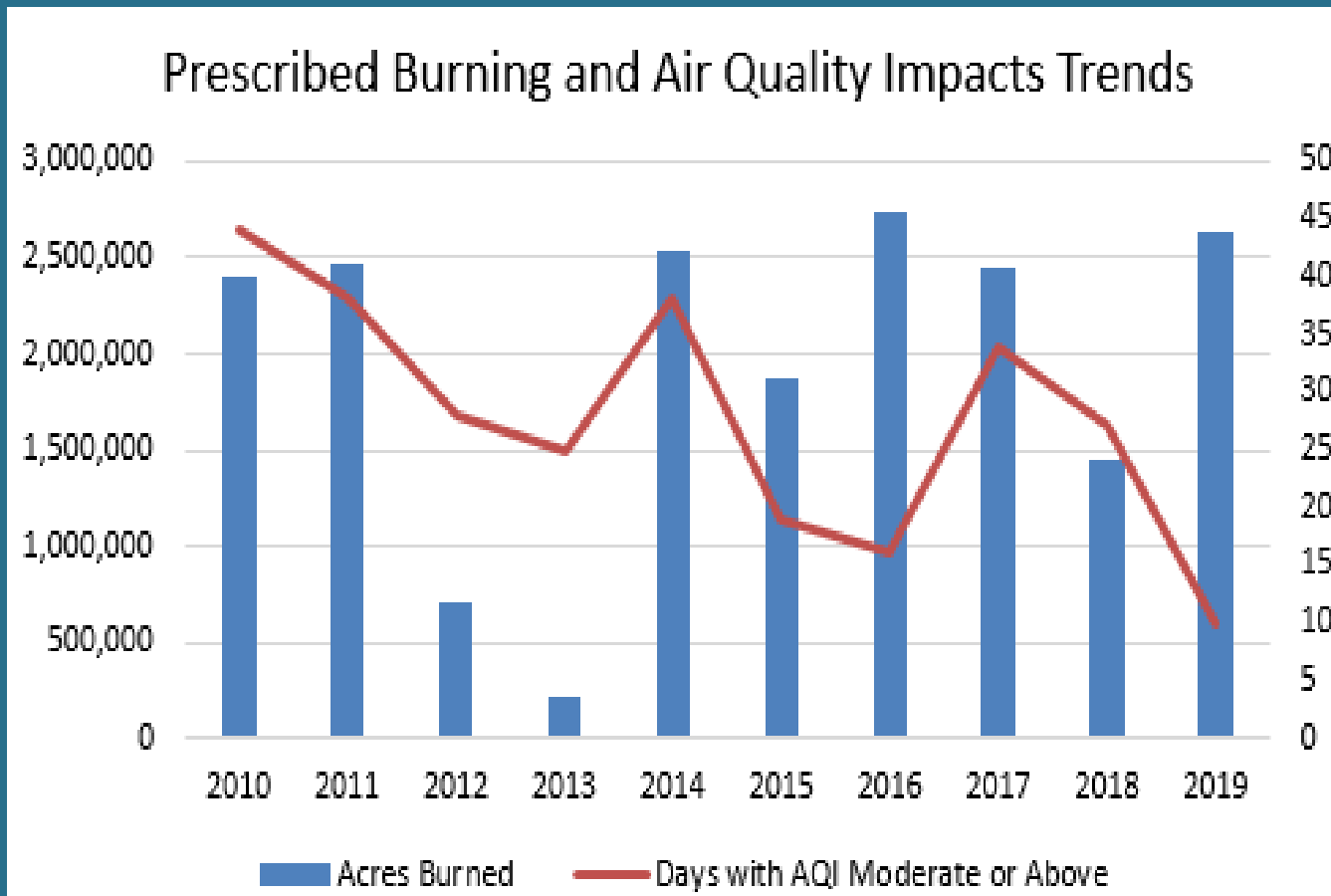
Flint Hills (KS & OK) Acres Burned (2018 and 2019)



Acres Burned by Year



Burning and Air Quality Impact Trends



2019

2,627,737 acres

MODERATE

10 days total

- Lincoln 5
- Omaha 2
- Bellevue 7
- Beatrice 8**

Ø UNHEALTHY
Sensitive Groups

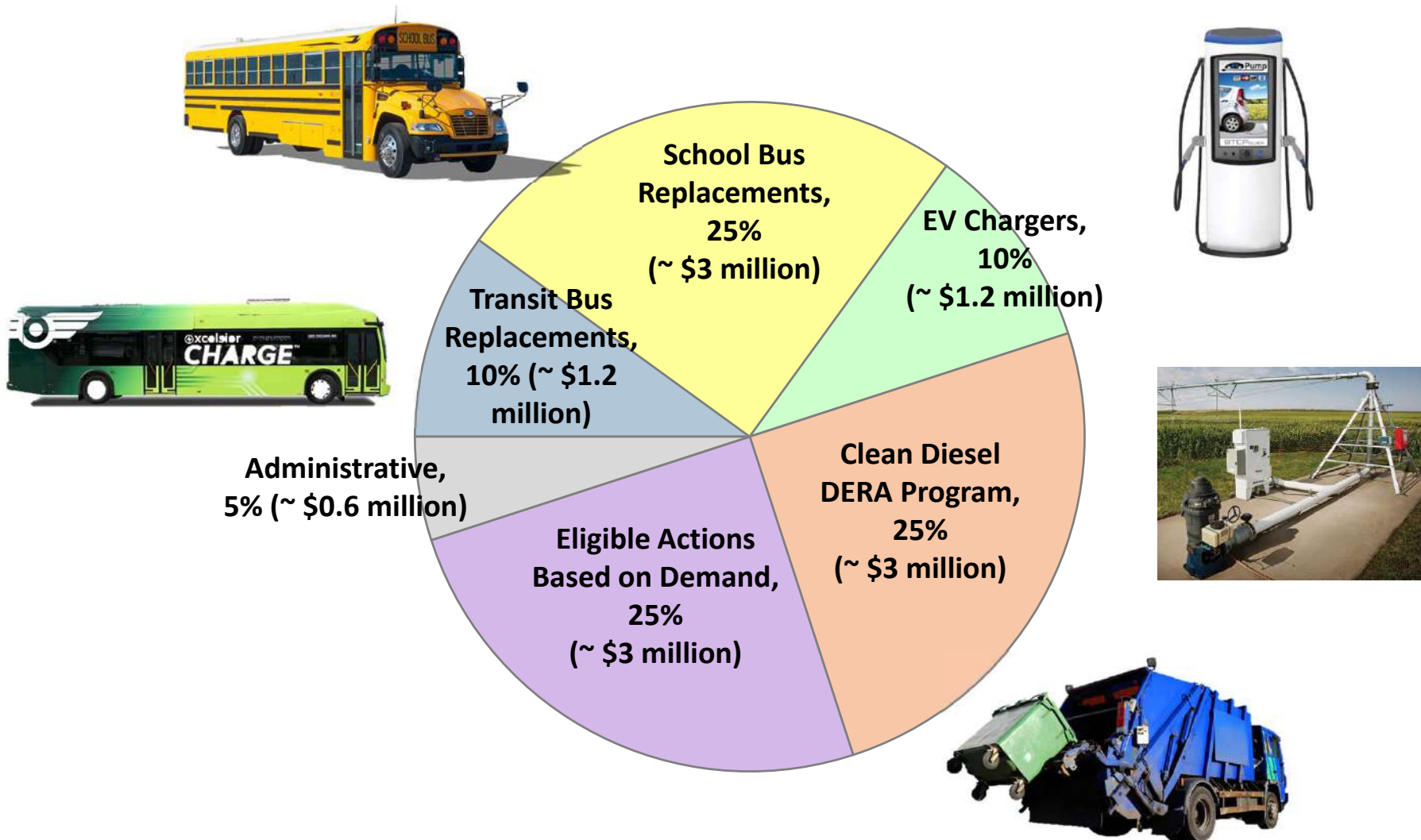
Ø UNHEALTHY
For All

(Daily AQI-PM_{2.5})

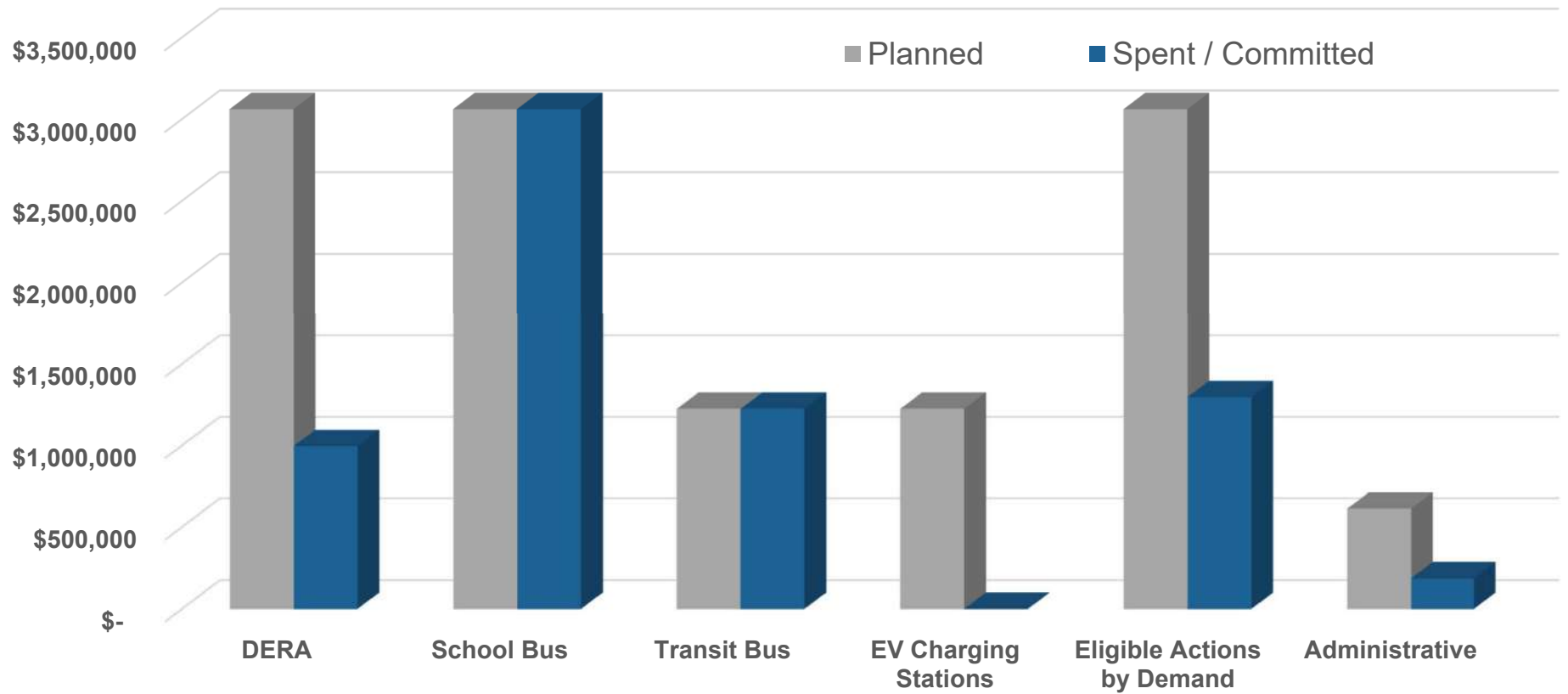
Agency Activities and Outreach

- Cross-agency Meeting in March 2019
 - Included fed/state/local agencies, NEMA, UNL, burn associations
 - Discussed burn activities, monitoring strategies, cross-agency communication, and public outreach
- KDHE provided weekly updates and smoke forecasts
- Local working group discussions on heavy burn days
- DHHS and local health department advisories
- NDEE webpage updated daily with forecast
- UNL sharing perspectives on rangeland management

Nebraska's Selected Mitigation Actions



VW Funding Status, August 2019



Vision for the Department

Will Meet Our Statutory Responsibilities

- Be Responsive
- Use Common Sense in Problem Solving
- Assistance Focused
- Believe we should help “local people solve local problems”

We help create opportunity through more effective, more efficient and customer focused state government

Questions?

