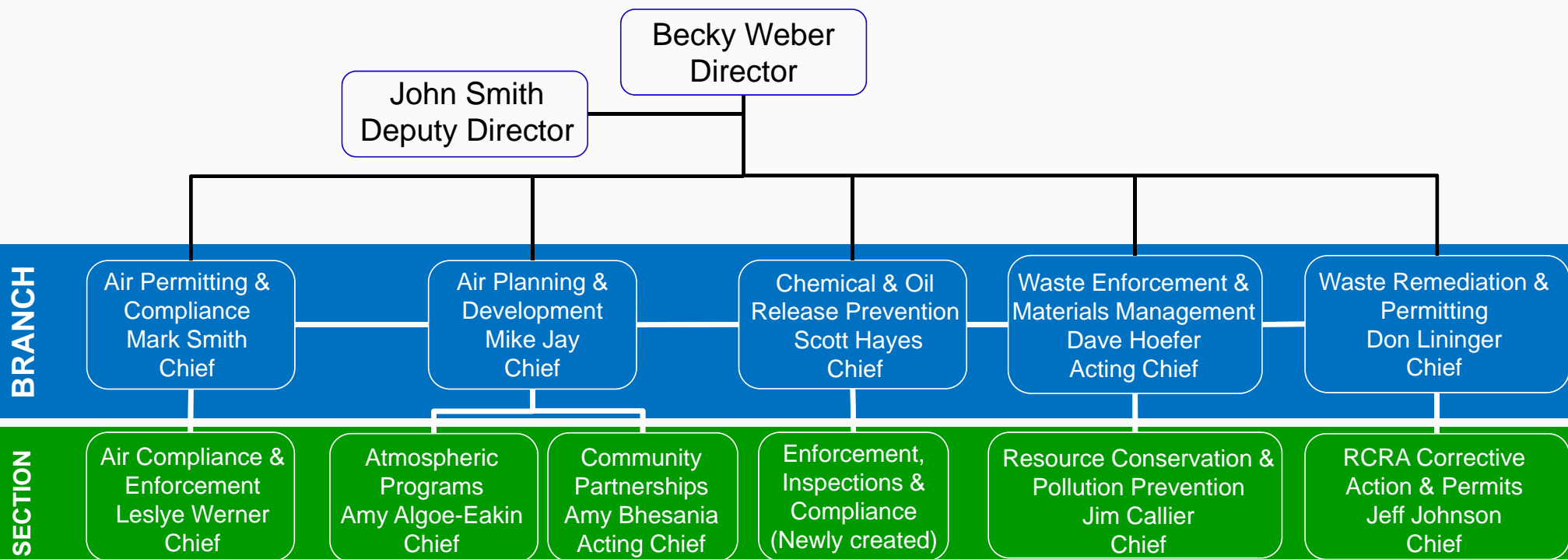




**Environmental Trends & Activities in
EPA Region 7
Iowa-Kansas-Missouri-Nebraska**



EPA Region 7 Air & Waste Management Division



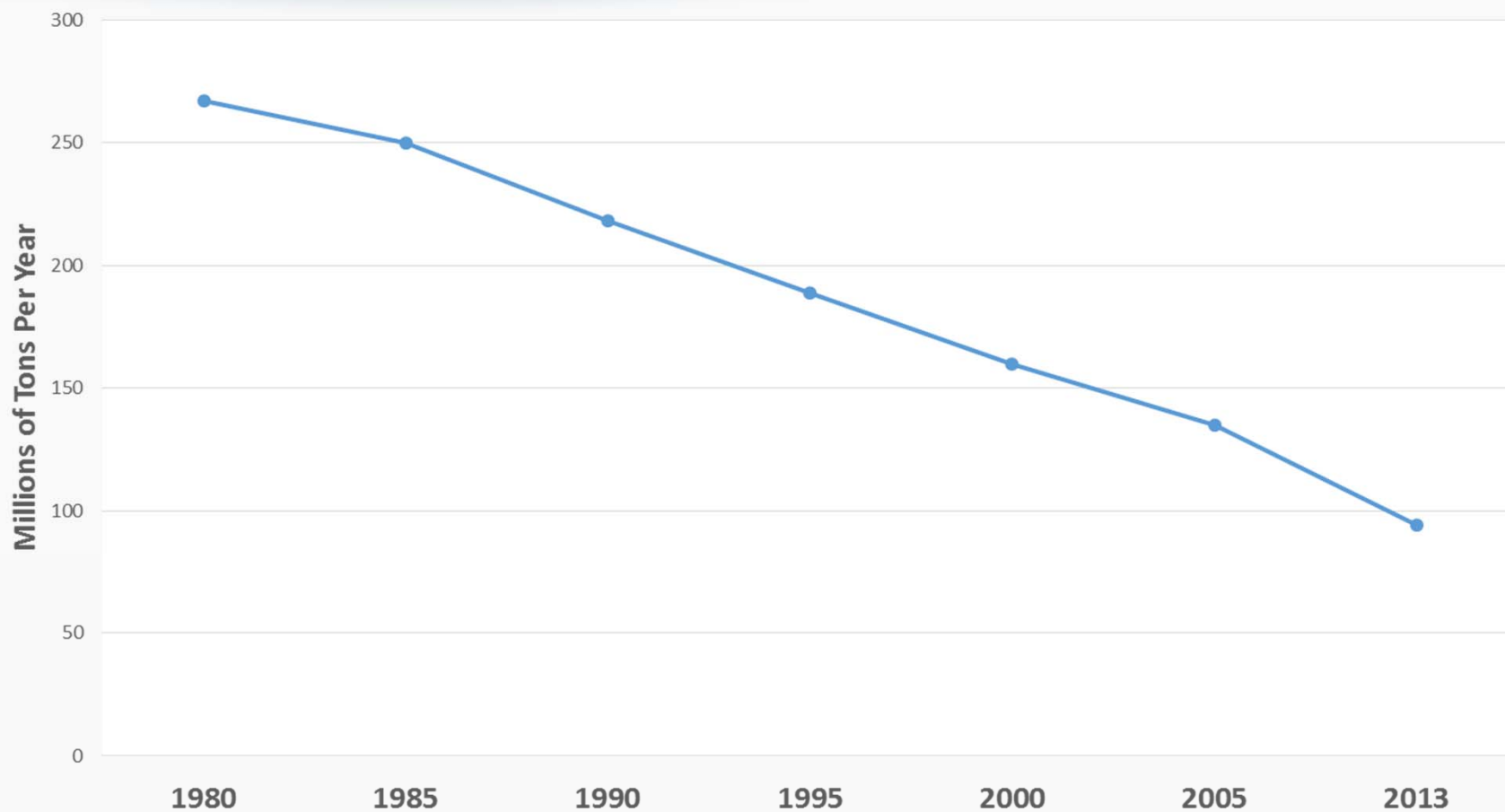
National Emissions Estimates



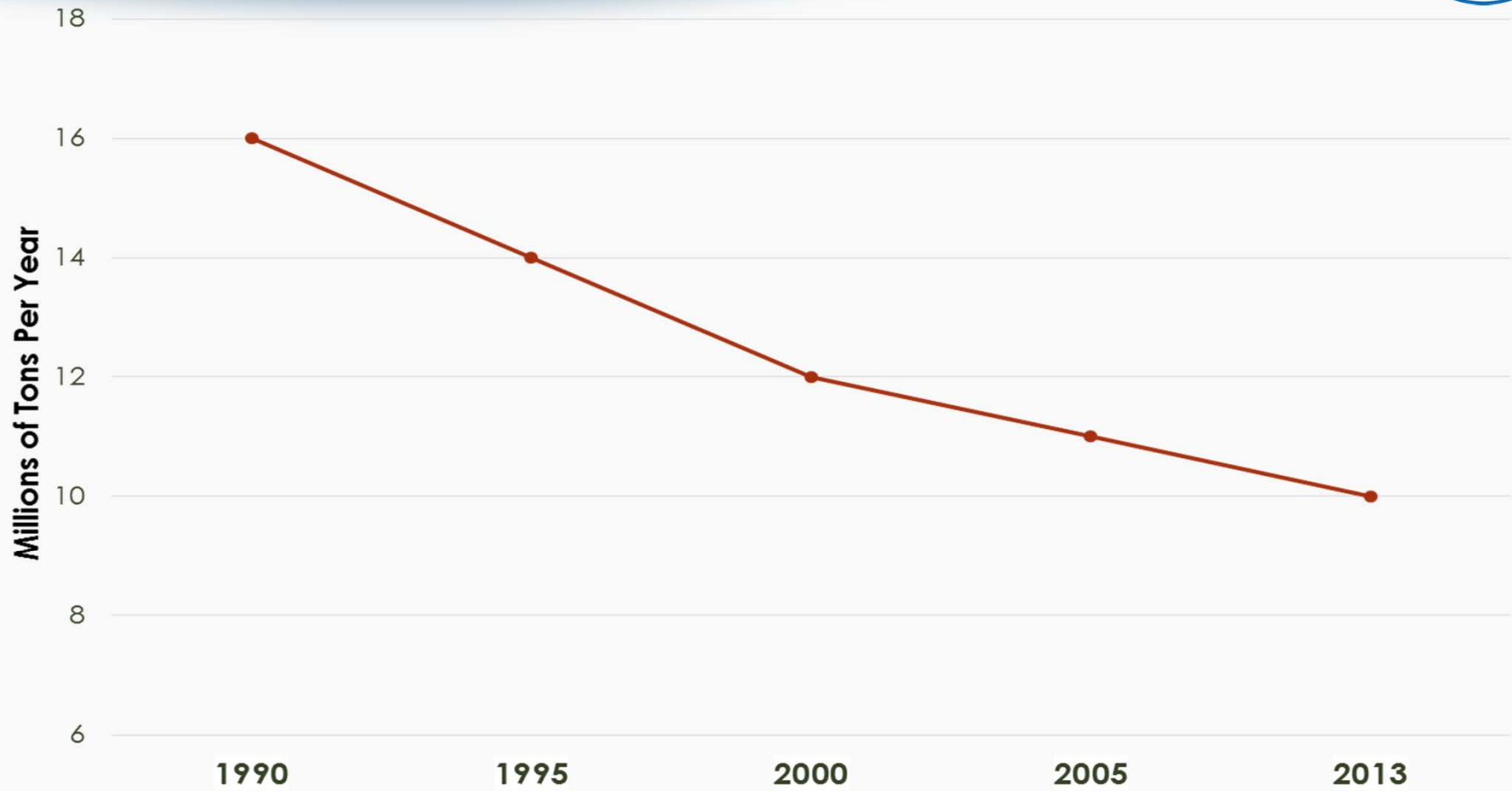
For Common pollutants and their precursors. Note: Fires and dust excluded

	Millions of Tons Per Year						
	1980	1985	1990	1995	2000	2005	2013
Carbon Monoxide (CO)	178	170	144	120	102	81	59
Lead	0.074	0.023	0.005	0.004	0.002	0.001	0.001
Nitrogen Oxides (NO _x)	27	26	25	25	22	20	13
Volatile Organic Compounds (VOC)	30	27	23	22	17	16	14
Particulate Matter (PM)							
PM10	6	4	3	3	3	4	3
PM2.5	NA	NA	2	2	3	3	2
Sulfur Dioxide (SO ₂)	26	23	23	19	16	14	5
Totals	267	250	218	189	160	135	94

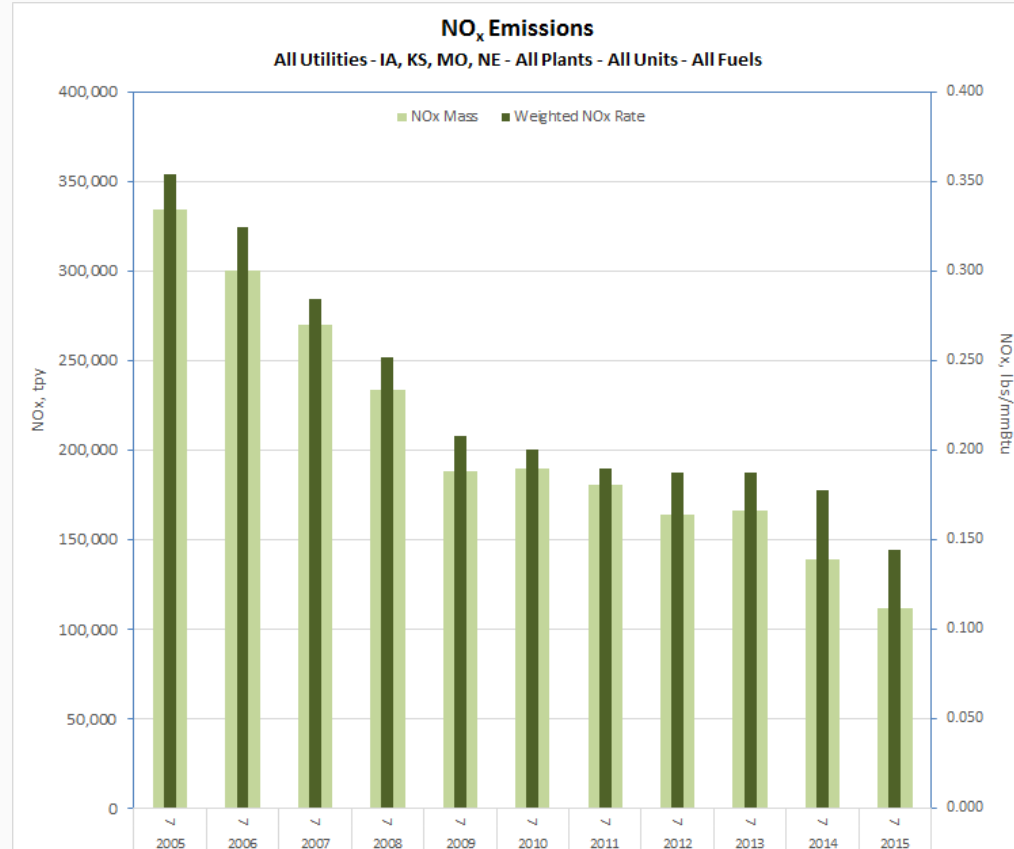
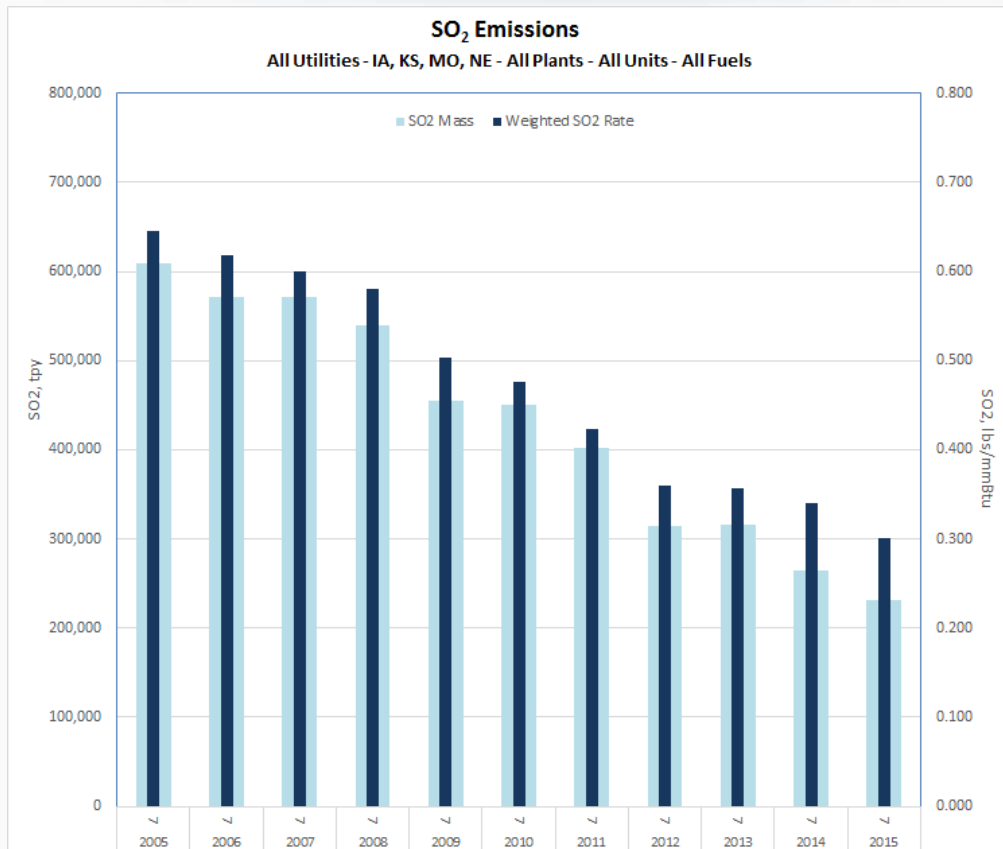
National Emissions Estimates Trend



Region 7 Emissions Estimates Trend



SO2 and NOx Utility Emission Reductions in Region 7



A horizontal banner with a light blue background. The top half features a silhouette of a city skyline with various buildings, a power line tower, and wind turbines. The bottom half is a dark blue band with the text "THE CLEAN POWER PLAN" in large, white, bold, sans-serif capital letters. To the right of the text is a smaller version of the EPA logo.

THE CLEAN POWER PLAN

epa.gov/cleanpowerplan #ActOnClimate #CleanPowerPlan

Supreme Court Stays the Clean Power Plan



- On February 9, 2016, the Supreme Court stayed implementation and enforcement of the Clean Power Plan pending judicial review. The Court's decision was not on the merits of the rule.
- Oral arguments in the D.C. Circuit are scheduled for June 2, 2016. Beyond that hearing, the schedule to resolve the matter is uncertain.
- For the states that choose to continue to work to cut carbon pollution from power plants and seek the Agency's guidance and assistance, EPA will continue to provide tools and support.

Key Points

- Implementation and enforcement are on hold
- Initial submittals not required on September 6, 2016
- EPA will continue to work with states that want to work with us on a voluntary basis

Air and Waste Enforcement Strategies



Focusing on utilizing Next Gen technologies such as FLIR cameras for innovative and enhance compliance and enforcement capabilities
Emphasis on Supplemental Environmental Projects (SEPs) as part of the settlement process
Development of R7's Air Toxics Compliance Strategy which commits the Region to reducing emissions of air toxics affecting our neighbors and communities.

Other Enforcement Initiatives:

- Community Air Protection Strategy
- Reducing Risks of Accidental Releases at Industrial and Chemical Facilities



Chemical Accident Risk Reduction National Enforcement Initiative



New National Enforcement Initiative (NEI)

- Covers Federal Fiscal Years 2017-201
- Approximately 150 chemical accidents per year among the universe of regulated Risk Management Program facilities
- Approximately 2,000 facilities are currently considered “high-risk”
- Common issues: training, equipment maintenance, inspections
- NEI goal of increasing industry attention on release prevention
- Focus will be on reducing the risks of accidents through accident prevention measures and technologies, and improving response capabilities

Community Partnership & Next Generation Monitoring –Kansas City, KS – Argentine



- “Next Gen” monitoring consists of a number of technologies that have the potential to transform how we monitor local air quality
- <http://villagegreen.airnowtech.org>

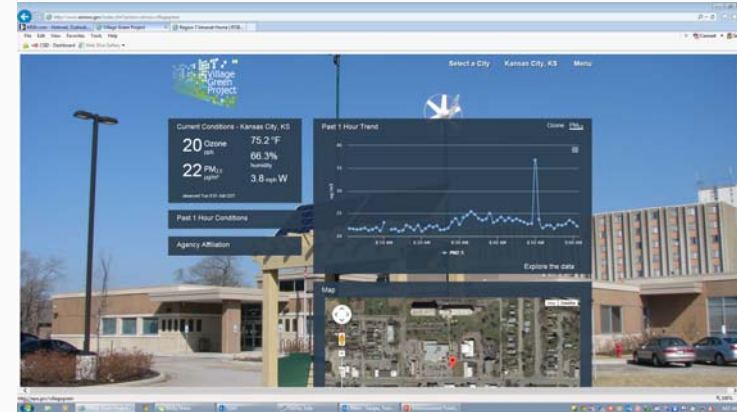
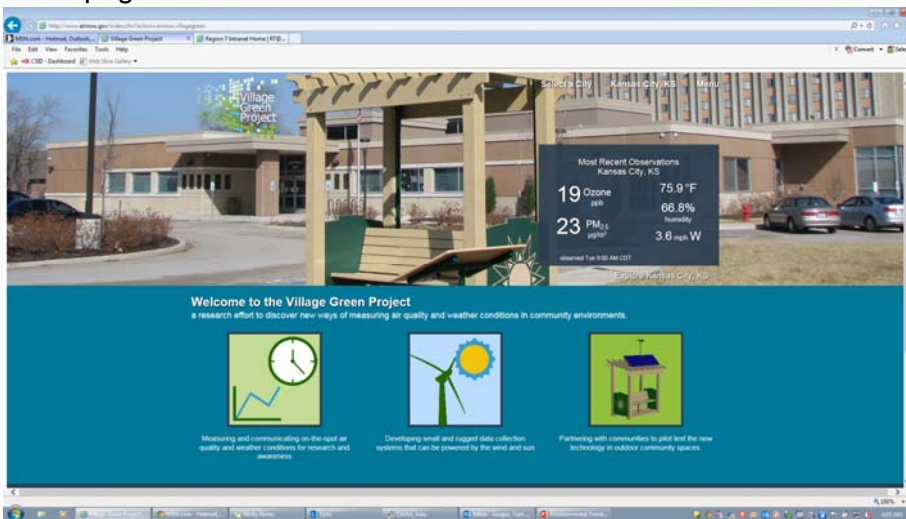


What's available on the website:

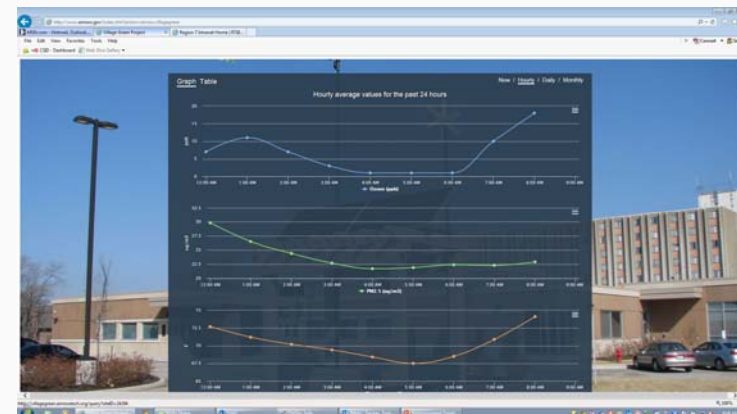


Dashboard

Homepage Overview



Explore the Data





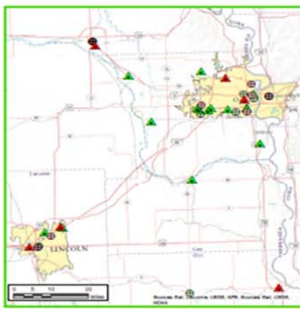
**Resource Conservation and Recovery Act (RCRA)
Clean-up Progress in R7**



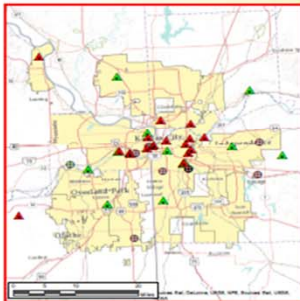
R7 RCRA Corrective Action Universe



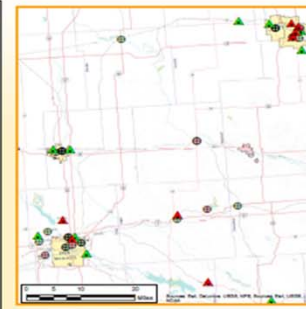
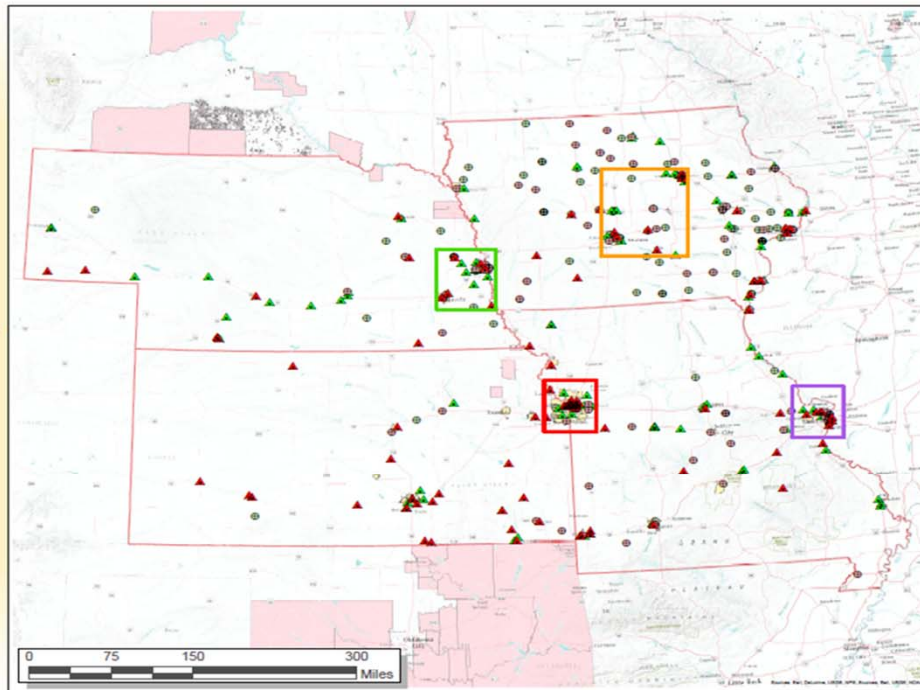
Region 7 RCRA Corrective Action Universe



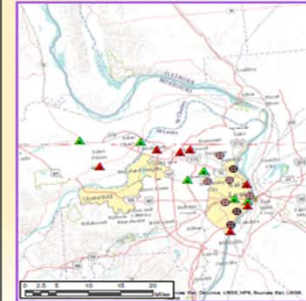
Omaha/Lincoln Metro Areas



Kansas City Metro Area



Des Moines/Waterloo Metro Areas



St. Louis Metro Area



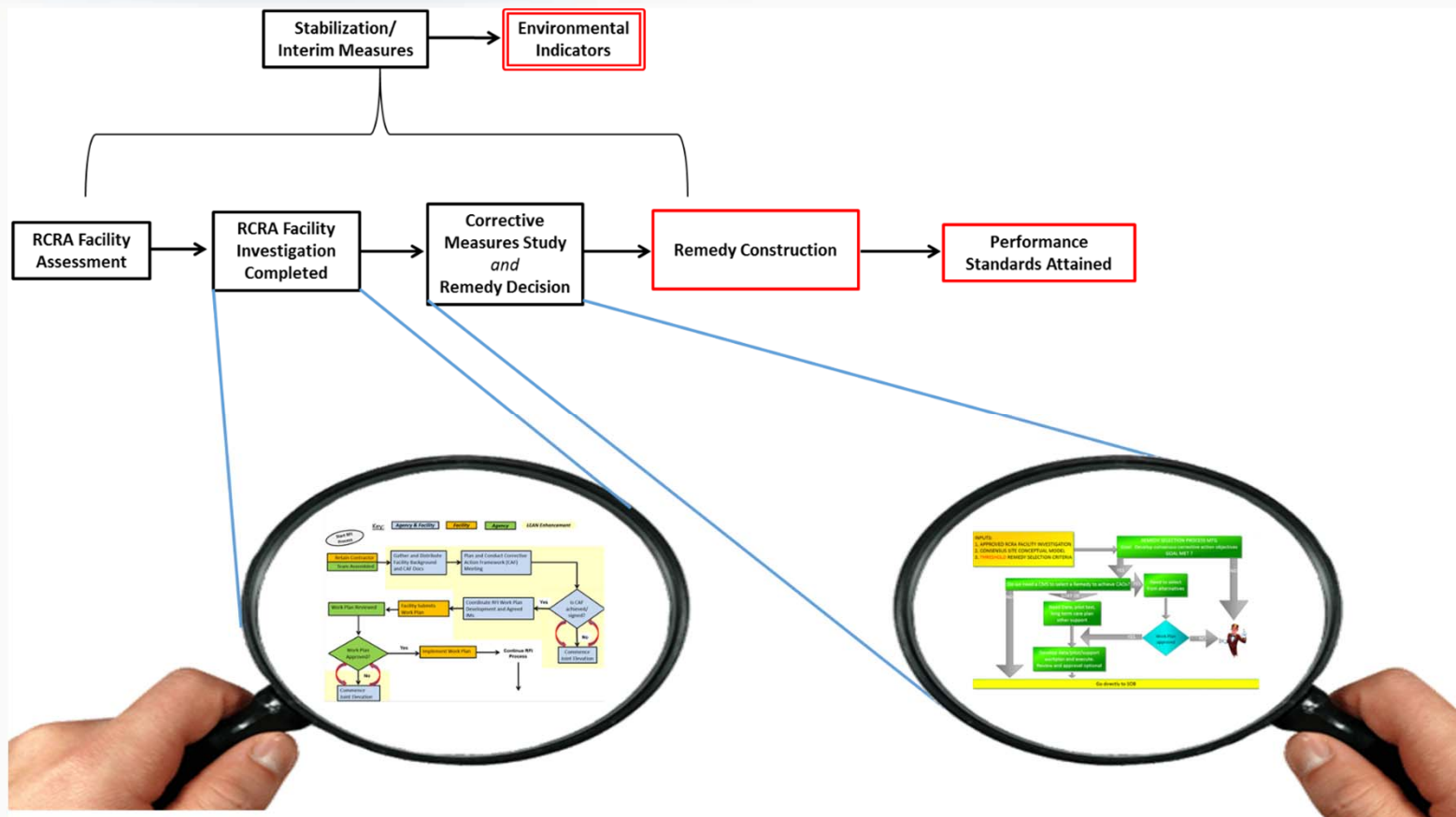
EPA Region 7

- 2020 Universe (204)**
- ▲ Remedy Constructed (CA550 Achieved) (105)
 - ▲ Remedy Construction Not Achieved (99)
- Non-2020 Universe (204)**
- Remedy Constructed (CA550 Achieved) (111)
 - Remedy Construction Not Achieved (93)
- City Boundary
 - Region 7 State Boundaries
 - Tribal Nations

Notes: Data updated in April 2015.



LEAN Corrective Action Process



Historical Timeframes: RFI and Remedy Decision



Avg. Time to Complete RFI

8.9 Years

Avg. Time from RFI Completion to
Remedy Decision

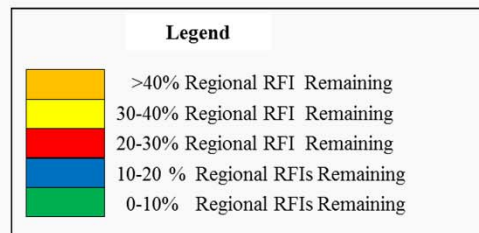
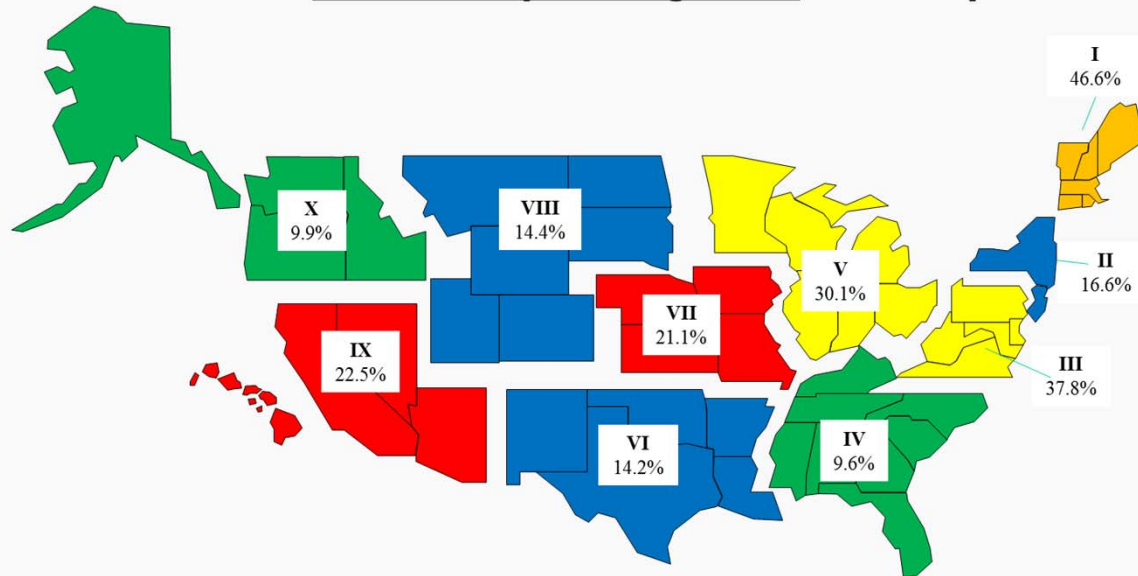
6.75 Years

Total Avg. Time: ~ 16 years

RCRA Facility Investigation



2020 Baseline RCRA Facility Investigations Potentially Remaining



RFI LEAN RESULTS

Old Process: 9 years
New Process: 5 years

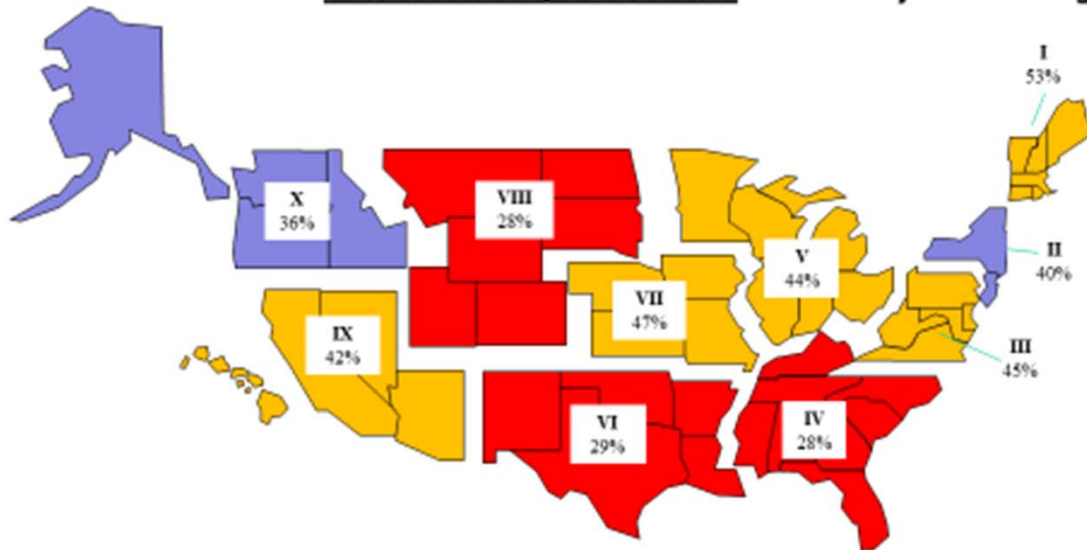
Old Process: 94 documents
New Process 15 documents

Old Process: 33 Review/Approvals
New Process: 7 Review/Approvals

Remedy Selection (CMS)



2020 Baseline RCRA Remedy Selections Potentially Remaining



Legend	
Yellow	>40% Reg. Remedy Selections Remaining
Purple	30-40% Reg. Remedy Selections Remaining
Red	20-30% Reg. Remedy Selections Remaining
Blue	10-20% Reg. Remedy Selections Remaining
Green	0-10% Reg. Remedy Selections Remaining

CMS LEAN RESULTS

Old Process: 6 years
New Process: 1-2 years

Old Process: 75 documents
New Process: 8 documents

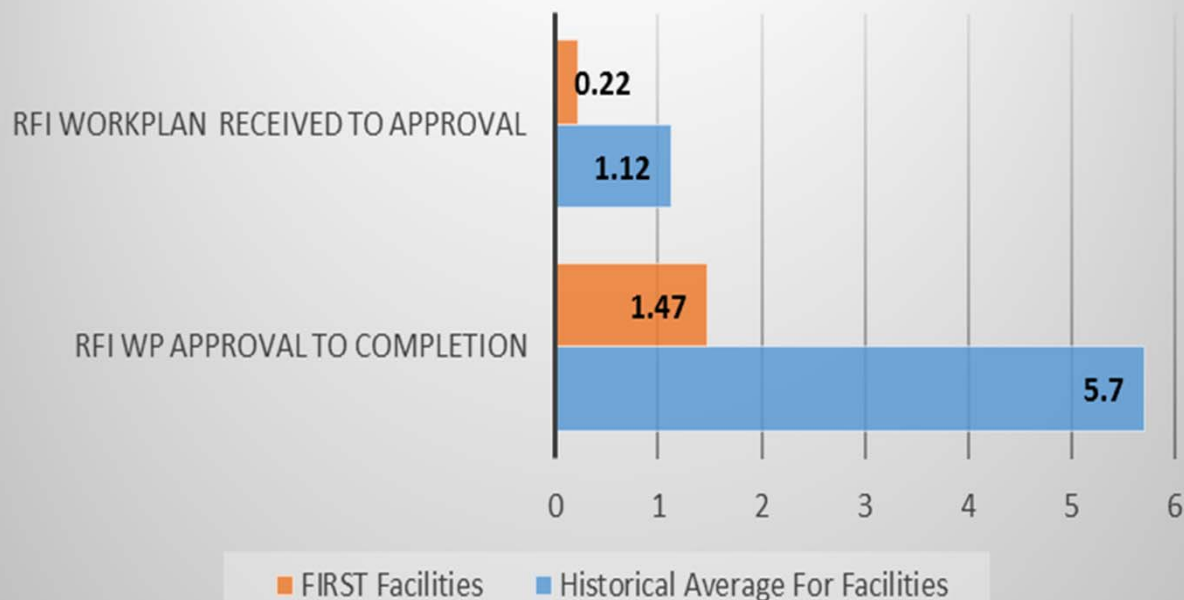
Old Process: 26 review/approvals
New Process: 5 review/approvals

Approximately 40% Remaining Nationally

Facilities Investigation Remedy Selection Track FIRST



R7 FIRST Implementation vs Traditional Implementation in Work Years



- 5 sites included in averages
- 80% Reduction in work years from when RFI workplan received to approval (1.12 years to .22 years*)
- 75% Reduction in work years from RFI workplan approval to RFI completion (5.7 years to 1.47 years*)
- Of 6 Remedy Selection meetings; 4 have resulted in a consensus of CMS not required, 1 with a focused CMS and 1 with additional meetings scheduled

*Numbers based on historical and FIRST project averages



Thank You!

Joh

John J. Smith
913-551-7845
smith.john@epa.gov